

Public Health Institutes of the World

IANPHI

FACE



**2020
PROGRESS
REPORT**



WHO WE ARE
PAGE 4

MEMBERS
PAGE 6

NATIONAL PUBLIC
HEALTH INSTITUTES
PAGE 8

NPHI TOOL KIT
PAGE 9

COVID-19 RESPONSE
PAGE 10

ANNUAL MEETING
PAGE 12

COUNTRY PROJECTS
PAGE 13

EXECUTIVE BOARD
PAGE 22

REGIONAL NETWORKS
PAGE 23

PARTNERS
PAGE 24

ACKNOWLEDGMENT
PAGE 25

STORIES FROM 2020
PAGE 26

WHERE TO FIND US
PAGE 27

MESSAGE FROM IANPHI PRESIDENT

IANPHI was established in 2006 to bring together national public health institutes (NPHIs) from around the world and assist in the development of new ones, ultimately working to create a more equitable world.



Since then, life for people across the globe has changed in ways we couldn't have expected and in 2020 we found ourselves in a global pandemic, fighting a complicated and devastating virus. It has never been more important and never has so much depended on the ability and willingness of countries to come together, share knowledge and resources and support each other.

IANPHI is uniquely positioned to help bolster health security, improving the health of people everywhere. What IANPHI provides – support to grow and build institutes, opportunities to collaborate with other public health professionals, to leverage regional networks and their peer institutes, toolkits and educational resources and so much more, is extremely important and is expanding all the time. Connecting people has been our biggest and most important tool in improving public health. In many ways the pandemic has connected us more than ever.

We have 110 members in 95 countries and, as we move forward into a post-pandemic period, our vision is to not only grow our membership and strengthen our professional relationships, but to harness the expertise we have to develop a bigger and more robust public health capacity globally, to advocate for NPHIs to be key public health players and to create an agile organization that works for everyone.

I look forward very much to what the future brings and know we are building on an excellent foundation.

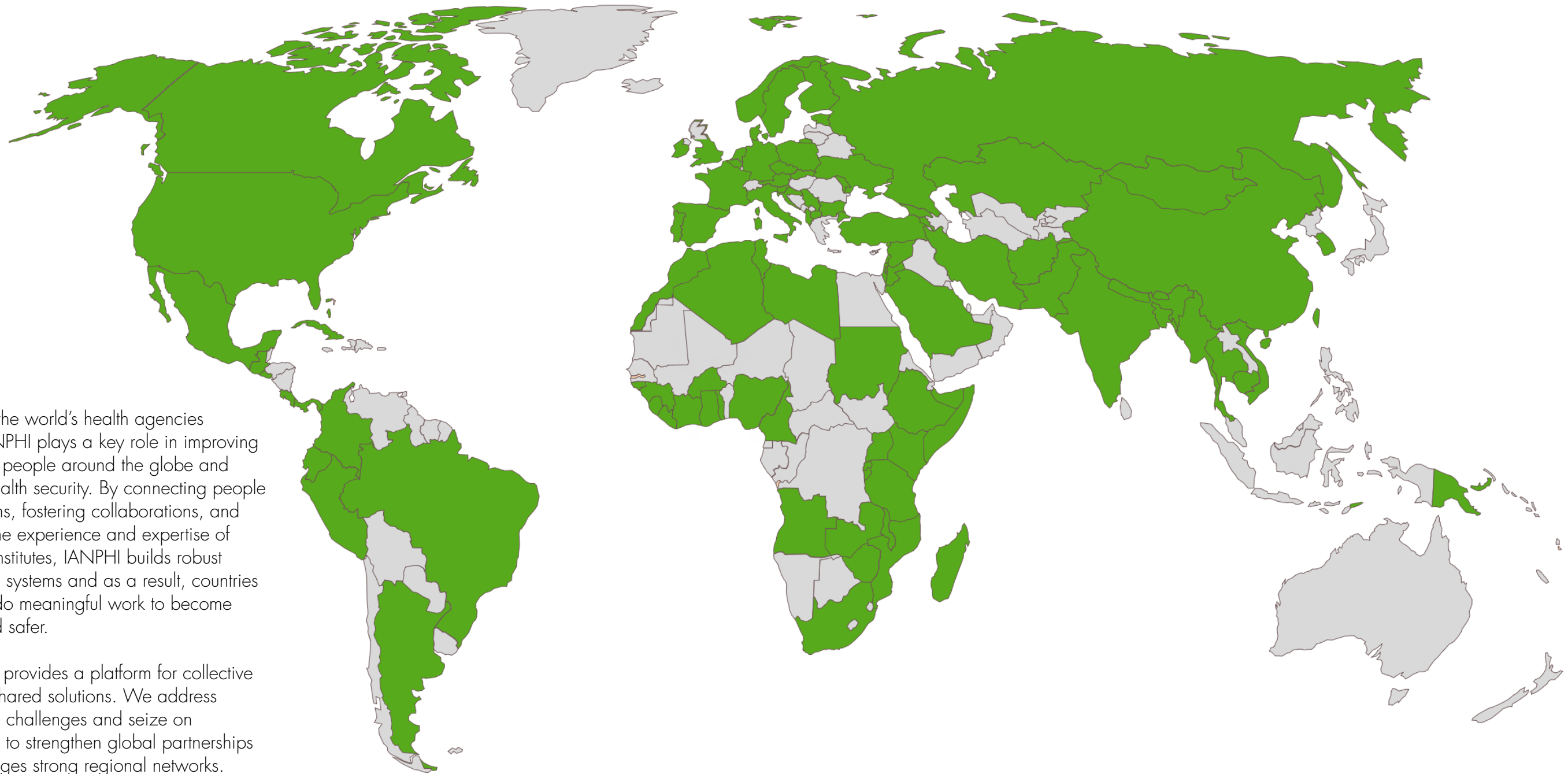
Professor Duncan Selbie
President of IANPHI

WHO WE ARE

THE INTERNATIONAL ASSOCIATION OF NATIONAL PUBLIC HEALTH INSTITUTES (IANPHI) WAS ESTABLISHED IN 2006 WITH THE AIM OF LINKING AND STRENGTHENING NATIONAL PUBLIC HEALTH INSTITUTES (NPHIs) AND ASSISTING COUNTRIES WITHOUT NPHIS TO DEVELOP THEM. OUR HOLISTIC APPROACH TO DEVELOPING COMPREHENSIVE NPHIS RATHER THAN INVESTING IN VERTICAL DISEASE PROGRAMS MAKE US UNIQUE.

110 MEMBERS
95 COUNTRIES

Currently, IANPHI has 110 member institutes across 95 countries and four regional networks: Africa; Asia; Europe; and Latin America and the Caribbean.



By bringing the world's health agencies together, IANPHI plays a key role in improving the health of people around the globe and bolstering health security. By connecting people and programs, fostering collaborations, and leveraging the experience and expertise of its member institutes, IANPHI builds robust public health systems and as a result, countries are able to do meaningful work to become healthier and safer.

Our network provides a platform for collective action and shared solutions. We address public health challenges and seize on opportunities to strengthen global partnerships and encourages strong regional networks.

MEMBERS

AFGHANISTAN
Afghan Public Health Institute

ALBANIA
Public Health Institute of Albania

ALGERIA
Institut National de Santé Publique

ANGOLA
Angola National Institute of Public Health

ARGENTINA
National Laboratories & Health Institutes Administration

ARMENIA
National Center for Disease Control and Prevention
National Institute of Health named after academician S. Avdalbekyan

AUSTRIA
Gesundheit Österreich GmbH

BANGLADESH
Institute of Epidemiology, Disease Control & Research

BELGIUM
Sciensano

BOLIVIA
Health Laboratories National Institute

BRAZIL
Oswaldo Cruz Foundation FIOCRUZ

BULGARIA
National Center of Public Health and Analyses

BURKINA FASO
Institut National de Santé Publique

BURUNDI
Burundi National Institute of Public Health

CABO VERDE
Instituto Nacional de Saude Publica

CAMBODIA
Cambodia National Institute of Public Health

CAMEROON
Department of Disease Control

CANADA
Public Health Agency of Canada
Public Health Expertise and Reference, Quebec

CHINA
Chinese Center for Disease Control and Prevention
Centre for Health Protection (Hong Kong)

COLOMBIA
Instituto Nacional de Salud

COSTA RICA
National Institute for Research on Nutrition & Health

COTE D'IVOIRE
Institut National de Santé Publique

CROATIA
Croatia National Institute for Public Health

CUBA
Institute of Tropical Medicine 'Pedro Kouri'

CZECH REPUBLIC
Czech Republic National Institute of Public Health

DENMARK
Staten Institut for Folkesundhed
Statens Serum Institut

ECUADOR
National Institute of Public Health Research

EL SALVADOR
Instituto Nacional de Salud

ESTONIA
National Institute for Health and Development

ETHIOPIA
Ethiopian Public Health Institute

FINLAND
National Institute for Health and Welfare

FRANCE
Santé publique France

GEORGIA
National Center for Disease Control and Public Health

GERMANY
Federal Center for Health Education
Robert Koch Institute

GHANA
Noguchi Memorial Institute for Medical Research
Ghana Health Service

GUATEMALA
Centro Nacional de Ciencias de la Salud

GUINEA
Agence Nationale de Sécurité Sanitaire
Institut National de Santé Publique

GUINEA BISSAU
Instituto Nacional de Saúde Pública

INDIA
India National Centre for Disease Control

IRAN
Institute of Public Health Research

IRELAND
Institute of Public Health of Ireland

ISRAEL
Israel Center for Disease Control

ITALY
Istituto Superiore di Sanità

JORDAN
Ministry of Health

KAZAKHSTAN
National Center for Public Healthcare

INTERNATIONAL ASSOCIATION OF NATIONAL PUBLIC HEALTH INSTITUTES

KENYA Kenya Medical Research Institute Kenya National Public Health Institute	PAKISTAN Pakistan's National Institute of Health	SOUTH AFRICA National Institute for Communicable Diseases
LIBERIA National Public Health Institute of Liberia	PALESTINE Palestinian National Institute of Public Health	SPAIN Instituto de Salud Carlos III
LIBYA Libya National Centre for Disease Control	PANAMA Instituto Conmemorativo Gorgas de Estudios de la Salud	SUDAN Public Health Institute of Sudan
MACEDONIA Republic Institute for Health Protection	PAPUA NEW GUINEA National Department of Health	SWEDEN Public Health Agency
MADAGASCAR Institute of Health Monitoring and Disease Surveillance	PERU Instituto Nacional de Salud	SYRIA Centre for Strategic Health Studies
MALAWI Public Health Institute Malawi	POLAND Poland National Institute of Public Health	TANZANIA National Institute for Medical Research
MEXICO Instituto Nacional de Salud Publica	PORTUGAL Instituto Nacional de Saúde Dr. Ricardo Jorge Instituto de Higiene e Medicina Tropical	THAILAND National Institute of Health of Thailand
MOLDOVA National Center of Public Health	REPUBLIC OF KOREA Korea Center for Disease Control and Prevention	TIMOR LESTE Instituto Nacional de Saude Publica
MONGOLIA National Center for Public Health	RUSSIAN FEDERATION National Research Center for Preventative Medicine	TOGO Institut National d'Hygiene
MOROCCO Institut Pasteur du Maroc Morocco National Institute of Hygiene Directory of Epidemiology and Disease Control, Ministry of Health	RWANDA Rwanda Biomedical Center, Institute of HIV/AIDS, Disease Prevention and Control	TUNISIA Institut National de Santé Publique
MOZAMBIQUE Instituto Nacional de Saúde	SAUDI ARABIA Saudi Arabia Center for Disease Control	TURKEY Refik Saydam Hygiene Center
MYANMAR Ministry of Health and Sports, Department of Public Health National Health Laboratory	SERBIA Institute of Public Health of Serbia	UGANDA Uganda National Institute of Public Health Uganda Virus Research Institute
NEPAL B.P. Koirala Institute of Health Sciences	SIERRA LEONE Ministry of Health and Sanitation	UKRAINE Public Health Centre of Ukraine
NETHERLANDS National Institute for Public Health and the Environment	SLOVENIA Institute of Public Health of Republic of Slovenia	UNITED KINGDOM Public Health England Public Health Wales
NIGERIA Nigerian Centre for Disease Control National Primary Health Care Development Agency Nigerian Institute of Medical Research	SOMALIA National Institute of Health, National Public Health Laboratory	UNITED STATES Centers for Disease Control and Prevention
NORWAY Norwegian Institute of Public Health		VIETNAM National Institute of Hygiene and Epidemiology
		ZAMBIA National Public Health Institute
		ZIMBABWE National Public Health Institute

NATIONAL PUBLIC HEALTH INSTITUTES

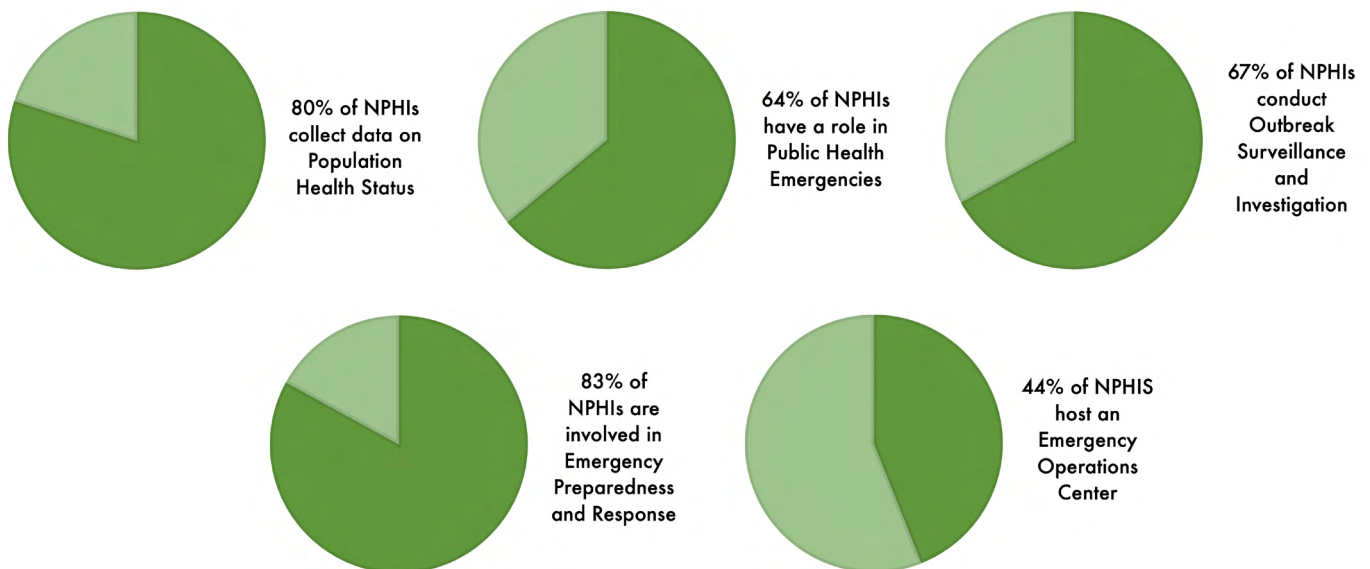
IANPHI MEMBERS ARE NATIONAL PUBLIC HEALTH INSTITUTES (NPHIs) AND GOVERNMENT ENTITIES THAT ARE EITHER INTERESTED IN DEVELOPING AN NPHI IN THEIR COUNTRIES OR PERFORM CORE PUBLIC HEALTH FUNCTIONS.

NPHIs are science-based organizations that provide national leadership and coordination for public health. They are usually part of the government – often under the ministry of health – or closely attached to it. NPHIs' priorities are driven by science and data rather than political influence.

NPHIs are a critical resource for developing and influencing policies, priorities and programs to address a country's main health issues.

NPHIs' core public health functions include disease surveillance, detection, and monitoring; outbreak investigation and control; health information analysis for policy development; research; workforce development; health promotion and health education; and laboratory science.

NPHI CORE FUNCTIONS: KEY NUMBERS



Source: [2019 IANPHI Membership Survey](#)

Strong NPHIs and collaboration among NPHIs are vital for local, national, and global public health and health security. Without systematic disease detection and control, disease prevention programs, and scientific research to inform government policy, countries cannot sustainably and meaningfully ensure the health of their citizens. IANPHI provides support to NPHIs in low-income nations to build capacity to respond to persistent and emerging public health threats.

TOOL KIT FOR NPHIs

IANPHI PROVIDES TECHNICAL ASSISTANCE TO COUNTRIES THAT ARE SETTING UP OR ENHANCING THEIR NPHIS. TO ASSIST MEMBER COUNTRIES AND PARTNERS IN THESE EFFORTS, WE HAVE DEVELOPED A TOOLKIT FOR NPHI DEVELOPMENT BASED ON OUR GROWING BODY OF EXPERIENCE.

[IANPHI Framework for NPHI Development](#)

[IANPHI - Africa CDC Framework for Development of NPHIs in Africa](#)

[IANPHI - Africa CDC Guidance on Providing a Legal Framework for an NPHI](#)

[IANPHI - U.S. CDC Staged Development Tool*](#)

[IANPHI Peer-to-Peer Evaluation Tool](#)

[IANPHI Stakeholder Engagement Planning Guide*](#)

Best practices

- [Legal Mandates and Governance for NPHIs](#)
- [Establishing an NPHI Foundation](#)
- [Mentorship](#)
- [Building a Business Case for NPHI Creation](#)
- [NPHI Staff Retention](#)
- [Recruiting an NPHI Director](#)
- [Peer-to-Peer Visits*](#)

Case studies

- [Integration of Tiered Networks within Public Health Institutes: the Ethiopian Public Health Institute Experience](#)
- [Ethiopia Public Health Institute \(EPHI\)](#)
- [Institut Pasteur du Maroc](#)
- [National Institute for Communicable Diseases \(NICD\), South Africa](#)
- [Public Health Agency of Canada](#)
- [U.S. Centers for Disease Control and Prevention \(CDC\)](#)
- [Creating the National Public Health Institute of Liberia](#)
- [U.S. Centers for Disease Control and Prevention Foundation](#)
- [IANPHI/Heymann Mentorship Program](#)
- [Mentorship: Nigerian Institute of Medical Research](#)
- [Peer-to-Peer: Pakistan National Institute of Health*](#)
- [Case Studies from Africa CDC Guidance on Providing a Legal Framework to an NPHI: Nigeria CDC, National Institute of Health of Mozambique, National Public Health Institute of Liberia, Guinea Bissau's NPHI](#)

[Media Relation Guide*](#)

*Added or updated in 2020

COVID-19 RESPONSE

THE COVID-19 PANDEMIC HAS BEEN THE GREATEST CHALLENGE OF MODERN TIMES FOR MANY NPHIs WORLDWIDE AND HAS PLACED THEM CENTER STAGE IN THE NATIONAL RESPONSES. THE PANDEMIC HAS BROUGHT PUBLIC HEALTH INTO PEOPLE'S EVERYDAY LIVES AND CONVERSATIONS AND IT IS NOW TOP OF THE BILL FOR GOVERNMENTS EVERYWHERE. TO SUPPORT ITS MEMBERS, IANPHI LAUNCHED SEVERAL INITIATIVES AND CONTINUED TO SUPPORT NPHI CAPACITY BUILDING THROUGH COUNTRY PROJECTS.

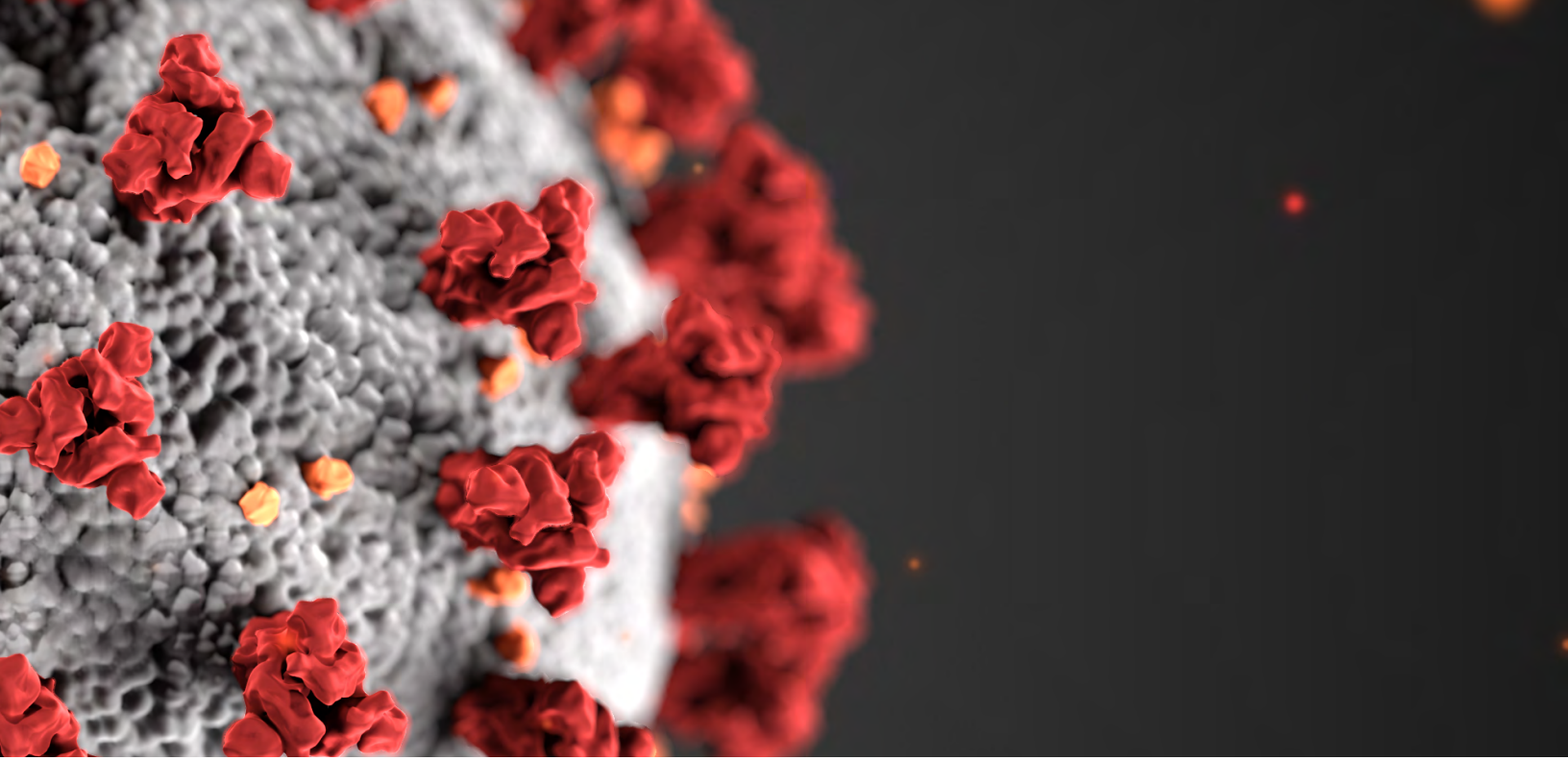
COLLECTING LESSONS LEARNED ON THE COVID-19 OUTBREAK

IANPHI is leading an initiative to identify and share preliminary lessons learned from NPHI responses to the COVID-19 outbreak. Forty-six members institutes participated in discussions about their work, strategies, successes and challenges in a series of regional meetings arranged by the IANPHI Regional Networks between September and November 2020. Participants shared effective practices between institutes and regions. IANPHI is developing a report on member experiences to illustrate the role of NPHIs and lessons identified in the response to health emergencies.

IANPHI COVID-19 RESOURCE HUB

To assist IANPHI members, partners, and other public health professionals, IANPHI created a COVID-19 resource hub, which includes publicly available resources, links and documents from international and regional organizations related to the pandemic response, as well as from resources from our member organizations related to their national responses. The hub received thousands of visits since it was first launched in February 2020.





IANPHI COVID-19 WEBINAR SERIES

IANPHI hosted seven webinars in 2020 for our members and partners globally to discuss how members are addressing and responding to the COVID-19 pandemic. Some webinars were country- or region-focused where NPHI directors from China, Italy, Korea, Burkina Faso, among others, talked about their own experiences. Other webinars tackled themes such as pandemic forecasts, lockdown de-escalation and the role of behavioral science.

The IANPHI Europe Network hosted at an early stage of the pandemic a meeting with its members to discuss the management of the COVID-19 pandemic, exchange information and approaches among peers. During the 2020 IANPHI European Director's Meeting in October 2020, the regional network also hosted a webinar on health equity investment in the context of COVID-19.

The IANPHI Latin America Network also organized regular meetings to allow its members to exchange experiences. Because NPHIs in Latin America and the Caribbean are traditionally laboratory-focused, the network's discussions focus on diagnosis, serology, genomics, the role of primary health care (particularly in research and community surveillance) in the current situation, vaccine production and vaccine logistics and strategies.

COUNTRY PROJECTS

With the support of IANPHI, the U.S. Centers for Disease Control and Prevention (CDC), the Bill & Melinda Gates Foundation and the Child Health and Mortality Prevention Surveillance (CHAMPS) network, NPHIs were able to capitalize on the investments made previously in surveillance, laboratory, and training to respond to COVID-19. Countries included Bangladesh, Burkina Faso, Cambodia, Colombia, Ethiopia, Kenya, Mali, Mozambique, Nigeria, Rwanda, Sierra Leone, South Africa, and Zambia.

2020 IANPHI ANNUAL MEETING

IN 2020, FOR THE FIRST TIME IN THE ORGANIZATION'S HISTORY, THE IANPHI ANNUAL MEETING WAS HELD VIRTUALLY. THE ANNUAL MEETING PROVIDES OPPORTUNITIES FOR NPHI DIRECTORS TO SHARE EXPERIENCES AND EXPERTISE, DISCUSS COMMON ISSUES, AND PLAN FOR FUTURE COLLABORATIONS.



2020 IANPHI ANNUAL MEETING
DECEMBER 1-2 | VIRTUAL

HOSTED BY



Ministério da Saúde

FIOCRUZ

Fundação Oswaldo Cruz

More than 100 NPHI directors and representatives participated in the IANPHI General Assembly meeting and in sessions on the renewal of the IANPHI Strategic Vision and the lessons learned from NPHI COVID-19 responses, which took place on December 1 and 2, 2020, hosted by Brazil's Fundação Oswaldo Cruz (Fiocruz). Participants took advantage of online meeting tools to enhance discussions with multimedia presentations.

At the general assembly meeting, André van der Zande, IANPHI's outgoing president, announced the election of Duncan Selbie as new president of IANPHI. Prof. Selbie served as chief executive of Public Health England from 2013 to 2020 as well as IANPHI treasurer from 2018 to 2020.

IANPHI's members also chose public health leaders to serve on IANPHI's executive board and chair the IANPHI Regional Networks. IANPHI welcomed a new member, the Austrian National Public Health Institute (Gesundheit Österreich GmbH), while the Caribbean Public Health Agency (CARPHA), which had been a member of IANPHI since 2014, changed its status from member to IANPHI partner.

The 2020 IANPHI Recognition of Success initiative, which shines a light on a selection of outstanding projects led by IANPHI member institutes, saw submissions tackling various topics unrelated to COVID-19, such as non-communicable diseases, health prevention and tropical diseases. The winners included Cape Verde's Instituto Nacional de Saúde Pública, Estonia's National Institute for Health Development, Georgia's National Center for Disease Control and Public Health, Belgium's Sciensano, and Colombia's Instituto Nacional de Salud (INS).

At the sessions dedicated to IANPHI's strategy and the COVID-19 lessons learned, IANPHI members provided valuable input to feed both the implementation of the new IANPHI Strategic Vision 2021-2025 and a first report on the IANPHI COVID-19 Lessons Learned Initiative in 2021.

COUNTRY PROJECTS

WITH FUNDING SUPPORT AND GUIDANCE FROM THE U.S. CDC VIA A COOPERATIVE AGREEMENT AND A GRANT FROM THE BILL & MELINDA GATES FOUNDATION, IANPHI SUPPORTS EFFORTS IN MORE THAN A DOZEN COUNTRIES THROUGHOUT AFRICA, LATIN AMERICA AND SOUTHEAST ASIA TO BUILD AND STRENGTHEN NPHIS, TYPICALLY IN THE AREAS OF PUBLIC HEALTH SURVEILLANCE AND EMERGENCY RESPONSE, WORKFORCE DEVELOPMENT, LABORATORY, DATA USE AND RESEARCH CAPACITIES, AND LEGAL FRAMEWORKS FOR NPHI ENTITIES. HERE IS A SELECTION OF COUNTRIES WHERE IANPHI IS CURRENTLY ACTIVE.



AFRICA CENTRES FOR DISEASE CONTROL AND PREVENTION

In 2020, IANPHI supported the Africa CDC Institute Workforce Development [COVID-19 Clinical Community of Practice](#) weekly calls. The community is intended to help African healthcare workers diagnose and treat COVID-19 patients and discuss challenging clinical issues.

2020 was also the first year of existence for two landmark documents produced by IANPHI, U.S. CDC and Africa CDC with a number of NPHIs and which serve as essential resources to countries in the Africa region as they work to establish new NPHIs:

- a Framework for NPHI Development in Africa, which includes core aspects of NPHI operations and public health functions;
- and a document on Providing a Legal Framework for a National Public Health Institute, which describes the types of legal mechanisms countries are using to establish NPHIs or enhance the stature of existing NPHIs and the issues typically addressed.

BURKINA FASO

IANPHI and U.S. CDC facilitated strategic planning workshops for Burkina Faso's Institut National de Santé Publique (INSP), engaging a wide range of stakeholders including the country's new Secretary General for the Ministry of Health. The workshops produced a final strategic plan that was approved and signed by the board of directors on January 24, 2020.

INSP has been playing a supportive role in the COVID-19 response, committed since the first hours of the pandemic through its Center of Health Emergency Response Operations (CORUS). This was INSP's real first test which confirmed the role, place and essential missions of the structure. Following interviews with INSP staff about the institute the opportunity to the institute to reflect on its functioning and provided important information on the institute's strengths and areas for improvement in outbreak responses. The next phase of work will focus on increasing INSP's ability to implement the missions assigned through the decree of establishment.

In July 2019, six leaders of INSP participated in peer-to-peer visits in two member institutes, Santé publique France and Belgium's Sciensano. IANPHI's peer-to-peer collaboration model facilitates the sharing of expertise and experience among member NPHIs. The Burkinabé delegation was able to tour both institutes, the emergency operation center (EOC) in France, and the laboratory in Belgium. High-level conversations centered around NPHI structure, establishment, and functions. Management and governance, internal control, national reference laboratories management, emergency response management, internal communications and research were also discussed.





CAMBODIA

In 2020 Cambodia's National Institute of Public Health (NIPH) took significant steps to improve their health research by setting up a mechanism to promote and monitor the implementation of the national health system research agenda, establishing themselves as the Ministry of Health's first reference contact for research needs.

IANPHI and U.S. CDC facilitated an NIPH strengthening program to identify key partners and build the capacity and quality of academic programs at the NIPH School of Public Health (SPH). This included a formal SPH capability assessment for offering blended online learning options which produced positive feedback to implement progressively.

IANPHI also provided technical assistance to the Cambodian institute to build a strategic plan for research development, publication and dissemination. A workshop identified key areas for improvement such as turning research into publications, creating a research training program for junior level staff, and facilitating more collaborations with research global experts and other NPHIs.

Since the start of the COVID-19 pandemic, NIPH was able to utilize IANPHI funding to quickly bolster their early response by training laboratory staff, procuring personal protective equipment, laboratory supplies, and testing reagents.



COLOMBIA

With support from IANPHI and U.S. CDC, INS Colombia was able to strengthen their national observatory, enhance surveillance, and improve emergency outbreak response. INS has continued to improve laboratory capacity by evolving their laboratory information system, by enabling diagnostics for whooping cough (PCR and electrophoresis processes), bacterial agents causing acute diarrheal disease (serology and cultures), mycology, ecology, and the bacterial agents causing bacterial meningitis ensuring improved water quality for laboratory work, and promoting safe handling of organisms.

The INS surveillance system was further strengthened by enhancing data collection and analysis for antimicrobial susceptibility and antimicrobial resistance, zoonoses, and viruses that cause diarrheal disease. Their enhanced surveillance system was also expanded to be able to monitor the health status of the more than 1.8 million recent Venezuelan migrants.

IANPHI's communications team worked with INS to showcase the impact of INS and their mission and recently published a [video highlighting their snake venom production program](#). Additional plans to expand their Field Epidemiology Training Program (FETP) are underway.

CÔTE D'IVOIRE

Côte d'Ivoire's NPHI, Institut National de Santé Publique (INSP), has been working to revitalize its activities following the 2010-2011 post-electoral crisis. The institute, whose activities focus on public health research and workforce development, has been aiming to achieve a higher level of functioning in public health research.

On September 16, 2020 INSP took part in the first virtual Staged Development Tool (SDT) workshop. Participants included INSP staff in Abidjan and Bouaké and a team of facilitators from IANPHI and U.S. CDC in Atlanta. Members of INSP's management team had an in-depth discussion about their research activities. The SDT discussion guide dedicated to research helped them clarify INSP's current development stage, desired stage, and gaps that need to be addressed to reach the desired stage.

The INSP team discussed research priorities, systems and protocols, resources, quality and impact of research work and efforts to engage with stakeholders. Participants identified priority areas to build INSP's research capacity and increase its impact for the year to come, including updating INSP's 2015-2019 strategic plan and creating a new five-year plan.





MOZAMBIQUE

IANPHI and U.S. CDC continued to work with the National Institute of Health of Mozambique (INS) to strengthen its growing national capacity for surveillance and early detection of vector borne and zoonotic diseases, collection of high-quality data related to oral health and suicide, and building One Health capacity within the country. Ongoing work continued to enhance systems, human resources, and capacities at INS that will help them improve and modernize surveillance mechanisms for detection of vector borne diseases, conduct data-to-action training at the provincial level, improve grant management capacities, build One Health strategy and surveillance capacities. This was done by facilitating collaborations and mentorship among members such as Brazil's Oswaldo Cruz Institute and Kenya's One Health experts in Mozambique.

INS was able to pivot some funding that was already intended for emergency response towards several national emergencies that the country faced in the past year including two devastating cyclones, cholera outbreaks in the aftermath of the cyclones and COVID-19. IANPHI also continues to support CHAMPS data to action efforts in Mozambique including the establishment of a protocol for sharing CHAMPS cause of death findings with the INS health observatory.

NIGERIA

IANPHI and U.S. CDC are supporting Nigeria CDC in several areas, including laboratory capacity (improving collection, transportation, and field-testing of samples), strengthening outbreak management and emergency response through staff capacity development, creation of Rapid Response Teams and enhancing risk communication capacity. Further support is anticipated in the area of management training, data management training, and knowledge management. To further strengthen the workforce of the Nigerian CDC, the Improving the Public Health Management for Action (IMPACT) fellowship program was implemented to enhance the capacity of the graduates in planning, implementing and evaluating Public Health Programs. In addition, IANPHI and U.S. CDC provided media, risk, scientific communication and writing support to further strengthen the workforce capacity.

During the COVID-19 pandemic Nigeria CDC included response and treatment guidance to their existing work plan to aid the pandemic response. With continued IANPHI support, NCDC will further expand capacity in areas of data management, monitoring and evaluation, programme management, and grant management. In addition to workforce capacity building as well as the operationalization of its knowledge management strategy.





PAKISTAN

The Ministry of National Health Services, Regulations and Coordination (MoNHSRC) identified the Pakistan National Institute of Health (NIH) to serve as the NPHI for Pakistan in 2017. Several discussions have been held in 2020 about a way forward for strengthening the Pakistan NIH.

Most recently, an organizational chart was developed that expands the NIH to include many of the functions that are typically within the scope of NPHIs, as well as some additional functions such as a health research institute with a clinical trials center and a vaccine and biological products center. The Pakistan CDC – which would function as the NPHI – would sit under the NIH umbrella. The current focus of discussions is on how IANPHI and U.S CDC can support Pakistan as it restructures these critical public health functions and creates the CDC, for example, by supporting leadership and management training.

Pakistan NIH has also been supported in recent years by the Netherlands' National Institute for Public Health and the Environment (RIVM) as part of a peer-to-peer collaboration. A NIH delegation visited RIVM in November 2017. We published a [case study](#) in 2020 about this visit.

ZAMBIA

The Zambia National Public Health Institute (ZNPHI) continues to grow and improve while demonstrating value to the Zambia government and population. The ZNPHI director led the legal framework process to its final stages, currently awaiting approval via the Ministry of Justice hearing.

IANPHI and U.S. CDC supported ZNPHI in further developing their institute, based on goals such as executing their operational plan, strengthening public health emergency preparedness and response and surveillance and disease intelligence, enhancing workforce development, and developing public health laboratory systems and networks. For example, key staff in seven provinces have been trained in Integrated Disease Surveillance and Response (IDSR) thereby strengthening capacity for prompt detection and reporting of diseases.

Through the Field Epidemiology Training Program (FETP), ZNPHI successfully trained two cohorts of frontline and two cohorts of advanced field epidemiologists. ZNPHI also conducted an Incident Management System (IMS) and COVID-19 response training in the western province which was one of the few provinces that had not been trained in IMS yet had reported COVID-19 cases.



Credit: Ian Hamilton / Emory Global Health Institute's Global Health Student Photography Contest

IANPHI EXECUTIVE BOARD

THE IANPHI EXECUTIVE BOARD PROVIDES POLICY OVERSIGHT FOR THE ORGANIZATION. THE 14-MEMBER BOARD INCLUDES THE PRESIDENT, VICE PRESIDENT AND IMMEDIATE PAST PRESIDENT OF IANPHI, AS WELL AS THE DIRECTORS OF 11 MEMBER NPHIs REPRESENTING ALL REGIONS.

PRESIDENT

Duncan Selbie, immediate past chief executive, Public Health England, United Kingdom

VICE PRESIDENT

Meerjady Sabrina Flora, immediate past director, Institute of Epidemiology Disease Control and Research (IEDCR) and National Influenza Center (NIC), additional director general of the Directorate General of Health Services (planning and development), Bangladesh

IMMEDIATE PAST PRESIDENT

André van der Zande, immediate past director general, National Institute for Public Health and the Environment (RIVM), The Netherlands

MEMBERS

Martha Lucia Ospina, director, Instituto Nacional de Salud (INS), Colombia

George Fu Gao, director general, Chinese Centers for Disease Control, China

Ebba Abate, director general, Ethiopian Public Health Institute, Ethiopia

Lothar H. Wieler, president of Germany's Robert Koch Institute, Germany

Juan Ángel Rivera Dommarco, director general, Instituto Nacional de Salud Pública (INSP), México

Camila Stoltenberg, director general, Norwegian Institute of Public Health (NIPH), Norway

Valikhan Akhmetov, former director, National Centre for Public HealthCare of Kazakhstan, Kazakhstan

Abdullah Al Gwizani, chief executive, Saudi Centre for Disease Prevention and Control, Saudi Arabia

Aamer Ikram, executive director, National Institute of Health, Pakistan

Sabin Nsanzimana, director general, Rwanda Biomedical Center, Rwanda

Markku Tervahauta, director general, Finnish Institute of Health and Welfare, Finland

IANPHI REGIONAL NETWORKS

IANPHI SUPPORTS THE DEVELOPMENT OF REGIONAL NETWORKS, WHICH BRING TOGETHER MEMBER NPHIs WITH THE AIM TO FOSTER REGIONAL COLLABORATION, FACILITATE THE PROVISION OF MUTUAL SUPPORT AND TECHNICAL ASSISTANCE, AND SHARE EXPERTISE, EXPERIENCES AND BEST PRACTICES. THE IANPHI REGIONAL NETWORKS ALSO HELP BUILD REGIONAL PARTNERSHIPS THAT BENEFIT THEIR MEMBERS.

IANPHI AFRICA REGIONAL NETWORK

Chair: Alex Riolexus Ario, director of the Uganda National Institute of Public Health

Vice Chair: Hervé Hien, director of Burkina Faso's Institut National de Santé Publique

Members: 38 member institutes

IANPHI ASIA REGIONAL NETWORK

Chair: Haleema Al-Serehi, executive director of the Global Health Department at the Saudi Center for Disease Prevention and Control

Vice Chair: Muhammad Salman, chief of the Public Health Laboratories Division at the Pakistan National Institute of Health

Members: 29 member institutes

IANPHI EUROPE REGIONAL NETWORK

Chair: Quentin Sandifer, former executive director of public health services and medical director at Public Health Wales

Vice Chair: Annika Veimer, director of Estonia's National Institute for Health Development

Members: 35 member institutes

IANPHI LATIN AMERICA REGIONAL NETWORK

Chair: Felix Rosenberg, director of Itaborai Forum: Politics, Science and Culture in Health at Brazil's Fundação Oswaldo Cruz (Fiocruz)

Vice Chair: Claudia Perandonos of Argentina's Administración Nacional de Laboratorios e Institutos de Salud (ANLIS)

Members: 13 member institutes

PARTNERS

IANPHI WORKS WITH A NETWORK OF DEDICATED PARTNERS, EACH BRINGING THEIR EXPERTISE AND CONTRIBUTIONS TO SUPPORT AND ADVOCATE FOR STRONG PUBLIC HEALTH SYSTEMS AND NPHIS. THESE GLOBAL HEALTH ORGANIZATIONS, GOVERNMENT AGENCIES, BUSINESSES, FOUNDATIONS, ASSOCIATIONS AND INDIVIDUALS ARE VITAL TO THE DEVELOPMENT AND OPERATION OF OUR PROGRAMS, AND WE ARE GRATEFUL TO EACH FOR THEIR GUIDANCE AND ASSISTANCE.

CURRENT FUNDING PARTNERS

United States Centers for Disease Control and Prevention (U.S. CDC)
The Bill & Melinda Gates Foundation (BMGF)
IANPHI Foundation

HISTORICAL PARTNERS

The Rockefeller Foundation
Dr. David Heymann

GLOBAL AND REGIONAL PUBLIC HEALTH PARTNERS

Africa Centre for Disease Control and Prevention (Africa CDC)
African Society for Laboratory Medicine (ASML)
Agency for Public Health Education Accreditation (APHEA)
Association of Schools and Programs of Public Health (ASPPH)
Association of Schools of Public Health in the European Region (ASPHER)
The Caribbean Public Health Agency (CARPHA)
CHAMPS (Child Health and Mortality Prevention Surveillance)
World Health Organization (WHO)
WHO Regional Office for Europe (WHO EURO)

PRIVATE-SECTOR PARTNERS*

HDR's Design4Others
Perkins+Will

*Both private-sector partners are architectural firms which provide technical expertise to NPHI projects with the support of IANPHI.

ACKNOWLEDGMENT

We would like to thank the IANPHI Members which have generously contributed their time and resources since the creation of our organization, directly supporting our programs, executive board, regional networks, and most importantly their peer institutes, the lifeblood of our mission.

We are also grateful to members for hosting annual and regional meetings, hosting the IANPHI secretariat, and providing technical expertise.

What members have done and continue to do is so important and meaningful, and IANPHI could not function without their support and collaboration.



IANPHI Members at the 2019 IANPHI Annual Meeting in Addis Ababa, Ethiopia, in December 2019

IANPHI IN 2020: A SELECTION OF STORIES

TO LEARN MORE ABOUT WHAT IANPHI DID IN 2020, HERE IS A CURATED SELECTION OF THE STORIES PUBLISHED ON OUR WEBSITE IN THE PAST YEAR.

[IANPHI Renews its Strategic Vision to Reflect Exceptional Times for National Public Health Institutes](#)

[Collecting Lessons Learned on COVID-19](#)

[2020 IANPHI Annual Meeting: Highlights of the General Assembly](#)

[IANPHI Elects Duncan Selbie as President](#)

[IANPHI Launches Member-Only Communications Discussion Group](#)

[COVID-19 Resources for Members and Global Public Health Professionals](#)

[IANPHI, CDC, and Côte d'Ivoire Conduct First Virtual Staged Development Tool Workshop](#)

[IANPHI Europe Hosts Webinar on Investing for Health Equity during COVID-19](#)

[IANPHI Europe Hosts Webinar on Public Health and Climate Change Challenges](#)

["COVID-19 Provides a Compelling Case for an All-Hazards Approach"](#)

[IANPHI Survey Reveals Diversity of Membership, Highlights Financial Strain](#)

[IANPHI Visits Colombia INS's Anti-Venom Facility](#)

[Burkina Faso Publishes its First Population Health Status Report](#)

[Mobilization of Behavioral Science in the Time of COVID-19](#)

[IANPHI's Latin America Regional Network Comes Together during COVID-19 Pandemic](#)

[IANPHI Hosts COVID-19 Webinar with IHME on Pandemic Forecasts](#)

[IANPHI Supports COVID-19 Responses in Mozambique, Burkina Faso, Nigeria and Cambodia](#)

[IANPHI Europe Hosts COVID-19 Webinar on Lockdown De-escalation Strategies](#)

[IANPHI Hosts COVID-19 Webinar on the Role of West African NPHIs](#)

[IANPHI Statement on the World Health Organization](#)

[U.S. CDC and IANPHI Host Health Surveillance Workshop in Senegal](#)

[Colombia's NPHI Receives Award for State-of-the-Art Public Health Information System](#)

[IANPHI's Strategic Priorities for 2020](#)

WHERE TO FIND US

WEBSITE

IANPHI launched a new website in 2020, which boasts easier navigation, mobile-friendly design, a new tools and resources section, a new public health news section, and regular updates: www.ianphi.org.

IANPHI INSIDER

In 2020 IANPHI also debuted an improved, digital and clickable version of our newsletter, IANPHI Insider. IANPHI Insider serves our members by sharing information that provides knowledge, expertise and insights to help public health professionals learn from their peers. IANPHI Insider connects member organizations to IANPHI's work, and touts our successes, plans and challenges, as we strive to improve global health. [Subscribe now](#).

SOCIAL MEDIA



Follow us and tag us on Twitter using [@IANPHIhealth](https://twitter.com/IANPHIhealth)



Follow us and tag us on Facebook using [@IANPHIhealth](https://www.facebook.com/IANPHIhealth)



Follow us on [LinkedIn](#)



Follow [IANPHI YouTube Channel](#)

CONTACT

IANPHI Secretariat at Santé publique France
12 rue du Val D'Osne
94415 Saint-Maurice Cedex
France
secretariat@ianphi.org

IANPHI U.S. Office at Emory Global Health Institute
1599 Clifton Road
Atlanta, Georgia 30322
USA
info@ianphi.org

Public Health Institutes of the World

IANPHI



EMORY
UNIVERSITY

IANPHI.ORG