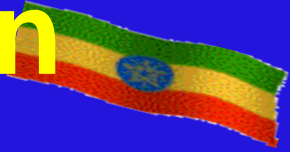
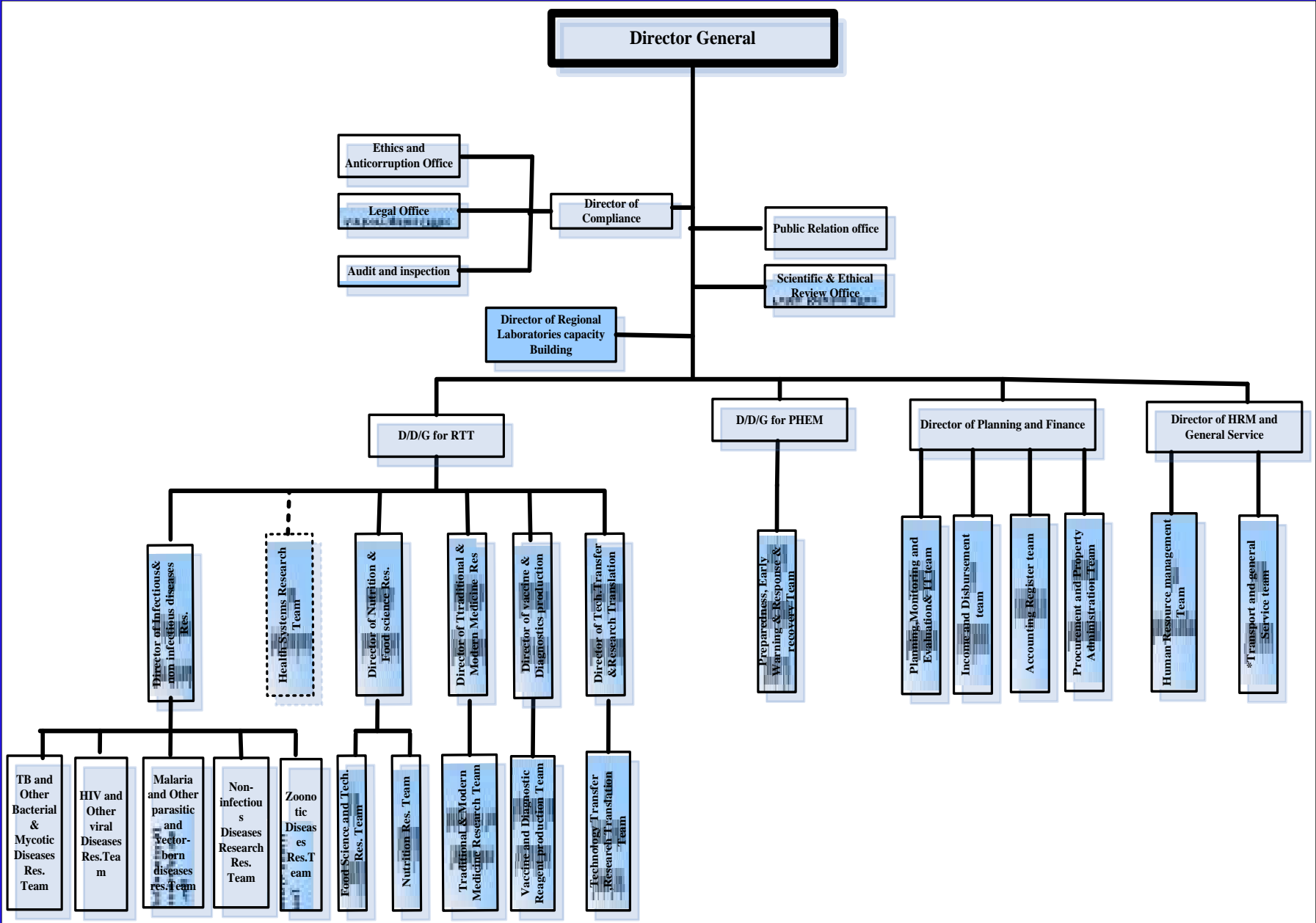


Ethiopian Health & Nutrition Research Institute



**Amha Kebede(DDG, EHNRI)
31 Oct -2 Nov, 2010, IANPHI Annual
Meeting, CDC Atlanta**



Scope / Functions

- **Infectious/ non infectious diseases, nutritional problems, traditional medicine, environmental health, hygiene, occupational hazard & health System researches**
- **Risk based preparedness, alert/early warning, prompt response and recovery**
- **Increasing coordination & communication b/n labs, capacity building & promotion of labs standards**
- **Production of essential vaccines and biologics**

Major Challenges

- Weak laboratory capacity and there is no a strong link between epidemiological and Lab surveillances
- Lack of skilled staff in NCD research
- Lack of adequate & well experienced staff
- Unhealthy reliance on central for epidemic preparedness and response activities
- Retention mechanism & motivation packages
- Lengthy procurement system

Strategic investment in EHNRI for its transition into a comprehensive NPHI

- Identify the priorities and get internal and external buy-in for the new NPHI**
- Develop emergency preparedness and response capacity through linkages, training, and information technology**
- Build environmental health research capacity**
- Develop the technologic infrastructure for supporting emergency operations**
- Develop research capacity in newly developed Health Systems Research Department at EHNRI**

Outcome to date

- The 5Y SPM for the future direction & for its new mandate in emergency finalized
- Critical capacities needed to identify & respond to public health emergencies
 - The plan for EOC is completed
 - Procurement for molecular sub typing of bacteria to identify & characterize outbreaks
- Priority areas for environmental study & for non-communicable diseases identified

Partnerships

- CDC
- IANPHI
- GF
- PEPFAR
- WHO
- FIND
- Perkins + Will
- International/Local Universities

Potential long-term outcomes

- **Strategic approach for the future direction of the national public health institute**
- **Critical capacity to tackle major public health challenges**
- **Capacity in early detection & response in public health emergency**
- **Capacity in environmental and NCD research**

Thank You!!!

