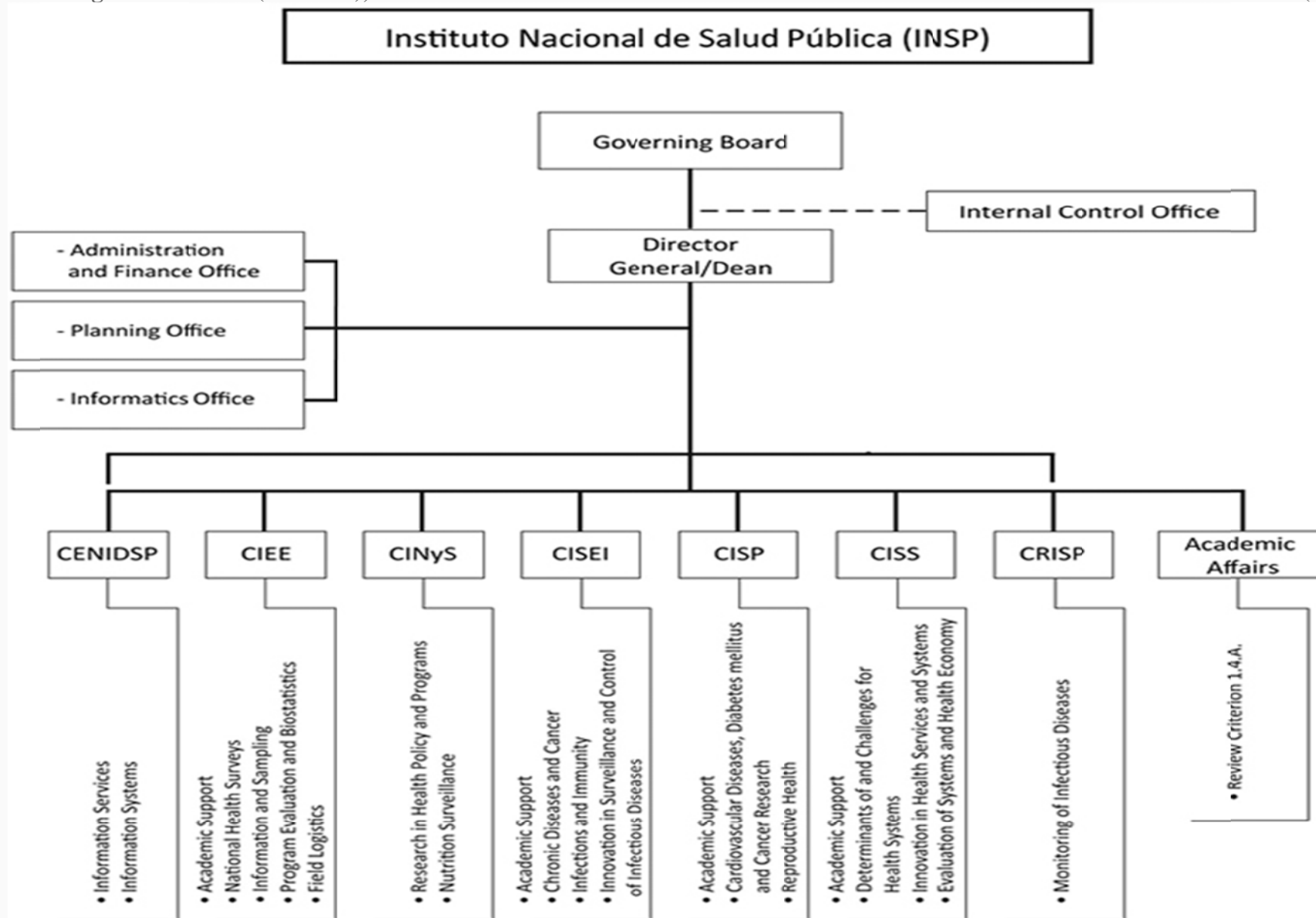


Organizational Structure

The INSP is an independent public institution that is one of a group of 12 National Institutes of Health associated with the Ministry of Health of Mexico (SSA). The other 11 institutes are focused primarily on providing medical care and secondarily on conducting basic research and teaching with a clinical focus. The INSP is unique among the National Institutes of Health in Mexico because of its academic mission; it is recognized as an institution of higher education by the Ministry of Public Education (SEP) and the National Association of Universities and Institutes of Higher Education (ANUIES), and is also a member of the International Association of National Public Health Institutes (IANPHI).





*Universidad No. 655 Colonia Santa María Ahuacatitlán, Cerrada Los Pinos y Caminera
C.P. 62100, Cuernavaca, Mor. México. Tel. (777)329 3000
<http://www.insp.mx/insp-overview/organizational-structure.html>*