

Emergency Preparedness and Response



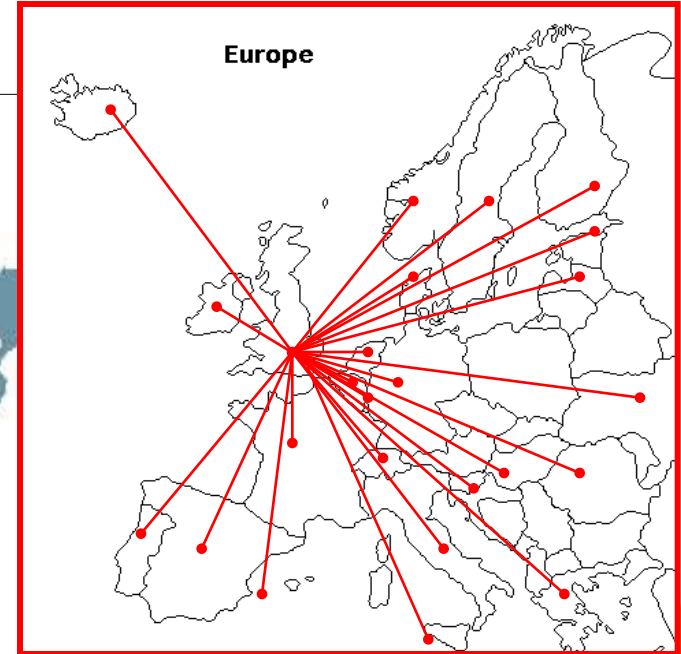
IANPHI Monday 1st November 2010

Justin McCracken

UK Health Protection Agency

Polonium Poisoning in London

- Unforeseen Hazard,
- Unquantified Risk,
- Widespread Contamination



Preparedness and Response as a public health activity – Learning from History

- Generic Plan (threat specific ones too)
 - Understand threats to health, how to identify hazards and monitor risk
 - Clarity about the roles of all organisations
 - Leadership for health issues
 - Exercising and evaluation
 - National policy framework
- Networks to access resources and intelligence
- Communications capability

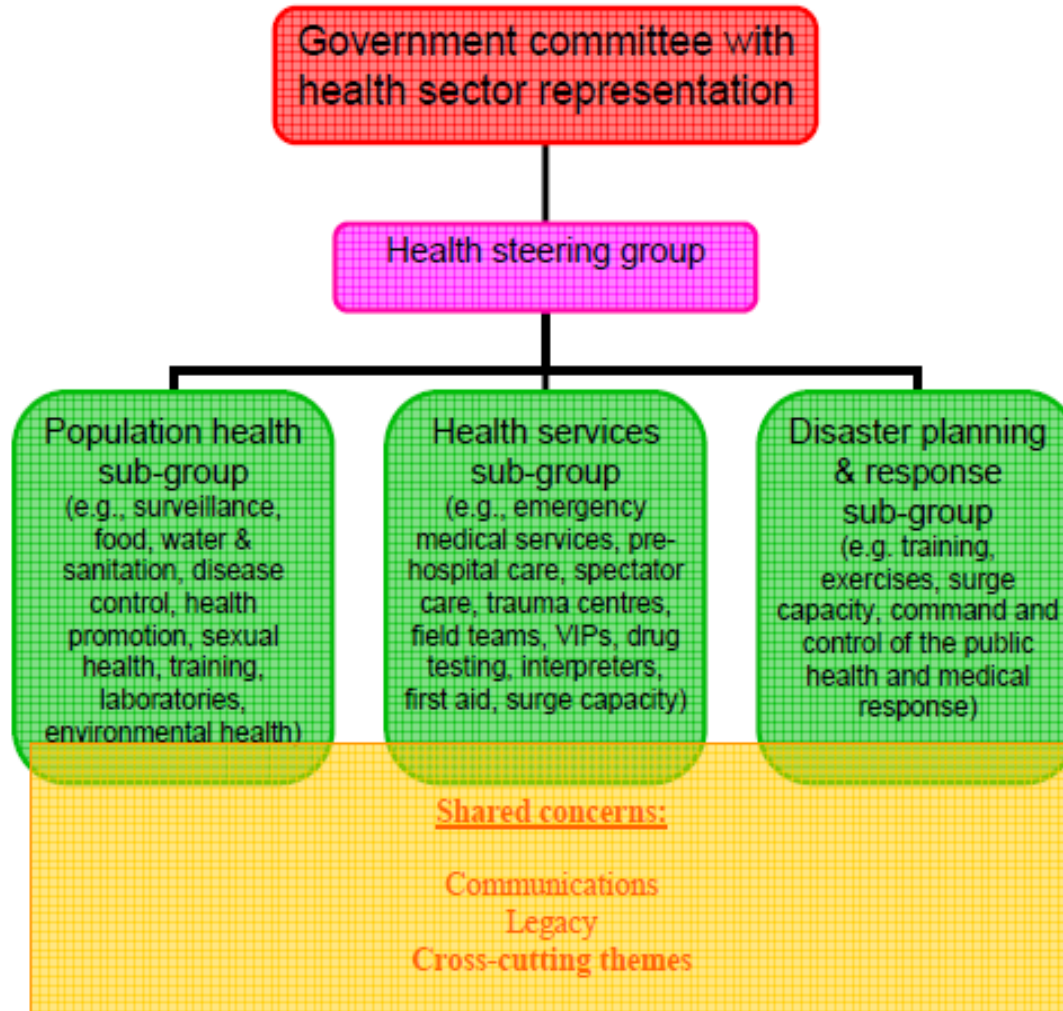


Core Competencies of public health for Emergency Preparedness and Response



- Intelligence
- Surveillance
- Analysis and interpretation of statistical trends and management of investigation (Modelling)
- Risk assessment
- Public Health Response
- Communications (Public and Professionals)
- Networking
- Influencing Policy

Mass Gatherings: WHO outline framework



Mass Gatherings Toolkits



IANPHI Toolkit for Sporting Events can be found here:

<http://www.hpa.org.uk/Topics/EmergencyResponse/InternationalSportingEventsToolkit/>

WHO guidance for all Mass Gatherings can be found here:

www.who.int/csr/mass_gathering/en/index.html



How may the Public Health Institutes develop our capacity and capabilities?

- Develop common risk assessment systems and methods
- Develop common information and intelligence systems
- Manage availability and access to rare / niche skills
- Provide standing arrangements to implement clinical, epidemiological and emerging evidence networks for emergencies and emerging threats

Sustainable public health preparedness infrastructure & capacity - role of NPHI



- Advocacy - awareness raising, policy development, demonstration of need for resources
- Research – horizon scanning new and emerging hazards, better detection , monitoring, mitigation
- Capacity building
 - identification of core competencies
 - development & delivery of training programmes,
- Evaluation of, and learning from, responses
- Sharing of experience and resources among NPHIs