

SESSION 3: ADVANCING PUBLIC HEALTH – DIGITAL TECHNOLOGIES AND ARTIFICIAL INTELLIGENCE

Moderated by Dr. Trygve Ottersen

IANPHI

ANNUAL MEETING

FEBRUARY 7-8, 2024 | KIGALI, RWANDA

HOSTED BY



Dr. Trygve Ottersen,
Executive Director, FHI, Norway,
and Chair of the IANPHI Europe
Regional Network

INTRODUCTORY SPEECH



Dr. Rose Nakasi,
Researcher, AI Lab, Makerere
University, Uganda

Dr. Eric Remera,
Division Manager, Research,
Innovation and Data Science and
Senior Researcher, RBC, Rwanda

Prof. Dr. Lothar Wieler,
Head of the Chair, Professor for
Digital Global Public Health,
Hasso-Plattner-Institut, Germany

PANELISTS INTRODUCTORY STATEMENTS

IANPHI

ANNUAL MEETING

FEBRUARY 7-8, 2024 | KIGALI, RWANDA

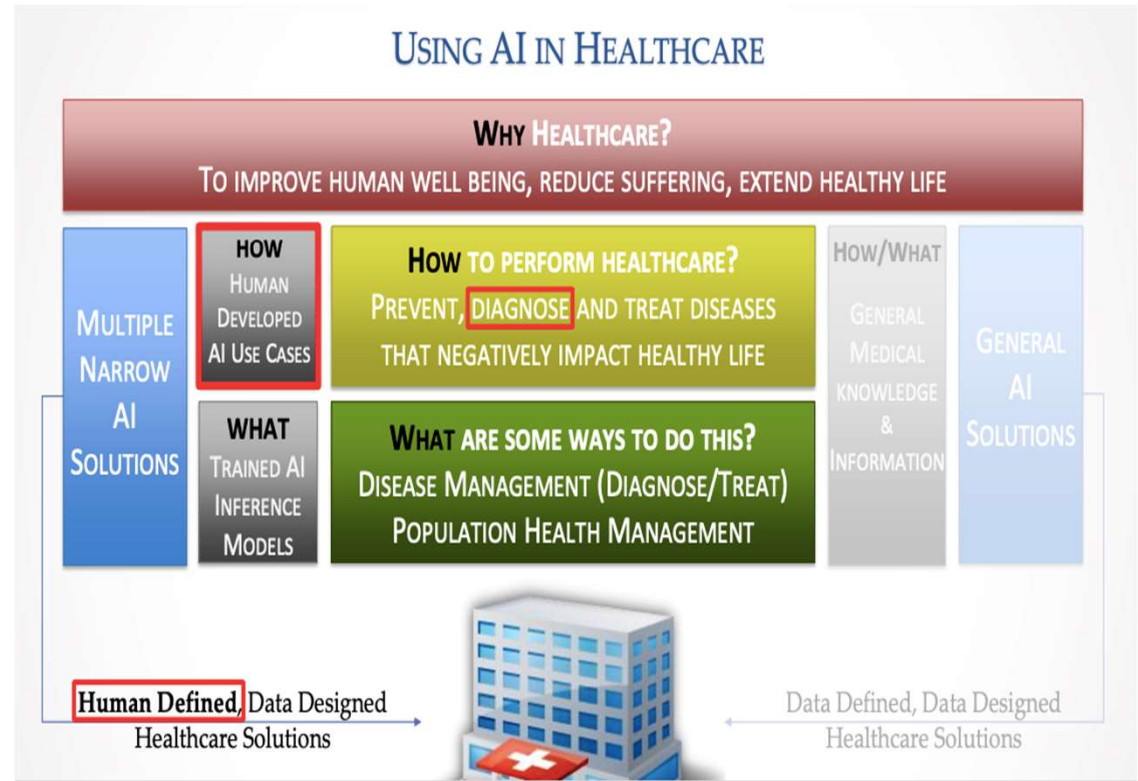
HOSTED BY



Dr. Rose Nakasi,
Researcher, AI Lab,
Makerere University,
Uganda

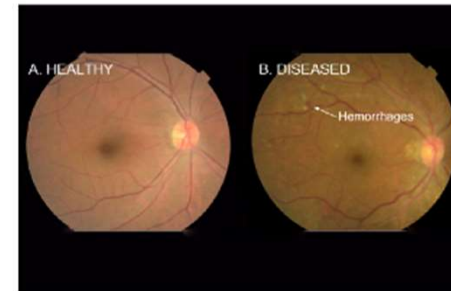
PANELISTS INTRODUCTORY STATEMENTS

Using AI in Health care



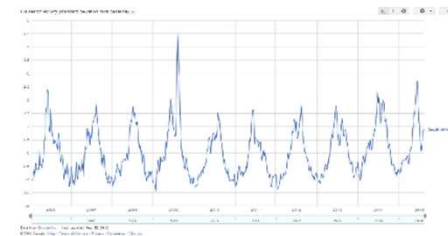
Potential of AI for Health

- Patients and families
 - Self-management of chronic diseases
 - Assistance for people with cognitive disabilities
- Clinical care teams
 - Diagnosis and risk assessment
 - Personalize treatment plans
 - Information retrieval and visualization



Potential of AI for Health

- Health systems/hospital administration
 - Patient scheduling
 - Identifying fraudulent claims
 - Prior authorization
- Public health
 - Disease surveillance
 - Monitoring air pollution



IANPHI
ANNUAL MEETING
FEBRUARY 7-8, 2024 | KIGALI, RWANDA

HOSTED BY

rbc Rwanda
Biomedical
Centre
Healthy People. Wealthy Nation

Leveraging AI for Health: A Case for Mobile Microscopy of Malaria



Opportunities of AI for Health

- Diagnosis- analyse all known data about the patient and produce insights
- Produce best practice treatments
- Additional time for healthcare practitioners to spend with patients
- Improve patient experience and aid behavioural change and treatment compliance

Perils for consideration moving forward

- Lack of enough datasets
 - Data shortages in Africa
- Lack of enabling government policies
 - Lack of a formidable policy on AI implementation strategies in Africa to prioritise the design and deployment of AI
- Undeveloped open discussions on the ethical implications of AI In health
 - Supports image analysis and has potential to improve the timeliness and accuracy
- Attitude of healthcare practitioners
 - Scepticism in adopting and using new technology
- Insufficient infrastructure and poor yet expensive network connectivity
- Changes in technology

IANPHI

ANNUAL MEETING

FEBRUARY 7-8, 2024 | KIGALI, RWANDA

HOSTED BY



Dr. Eric Remera,
Division Manager, Research,
Innovation and Data Science
and Senior Researcher, RBC,
Rwanda

PANELISTS INTRODUCTORY STATEMENTS

IANPHI

ANNUAL MEETING

FEBRUARY 7-8, 2024 | KIGALI, RWANDA

HOSTED BY



Prof. Dr. Lothar Wieler,
Head of the Chair, Professor
for Digital Global Public
Health, Hasso-Plattner-Institut,
Germany

PANELISTS INTRODUCTORY STATEMENTS

IANPHI

ANNUAL MEETING

FEBRUARY 7-8, 2024 | KIGALI, RWANDA

HOSTED BY



All speakers are
invited on stage

PANEL DISCUSSION