



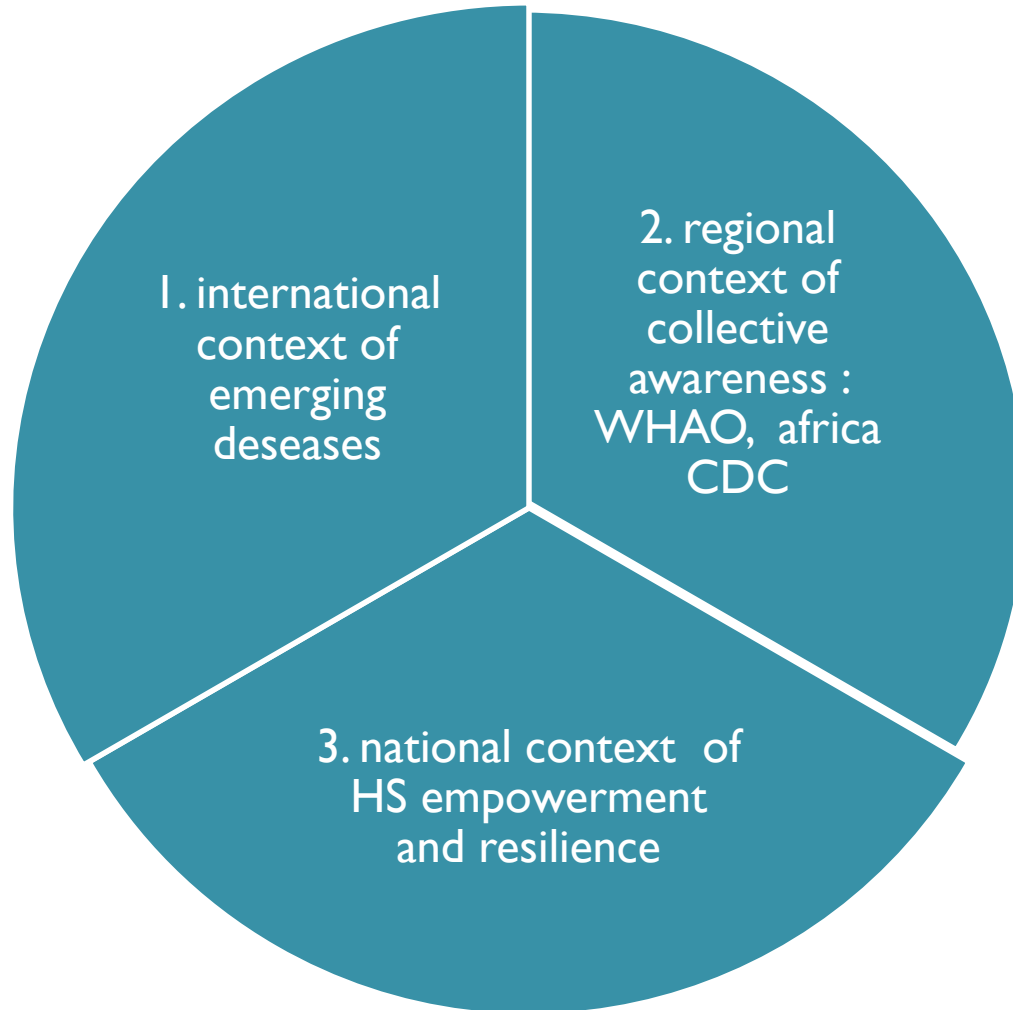
IANPHI Annual Meeting, 2019

**NPHI BURKINA FASO:
Creation and progress**

**Name: Hervé HIEN, General Director
MD, MPH, PhD**

Addis Ababa, 12/03/19

Context and justification



NPHI, Burkina Faso prefiguration, 2016, National technical committee

Group I: Missions	Developed argumentation of the creation of an NPHII Selected essential public health functions to be implemented
Group2 : special statute	Definition of an adapted legal form
Group3 : Staff Statute	Identification of potential career plan
Group4: Economic viability	Organizational, economic and financial study, scripting financial viability
Group5 : Social appropriation	Sociological diagnosis; perception/concerns/expectations

NPHI framework, Burkina Faso

Surveillance and
early detection

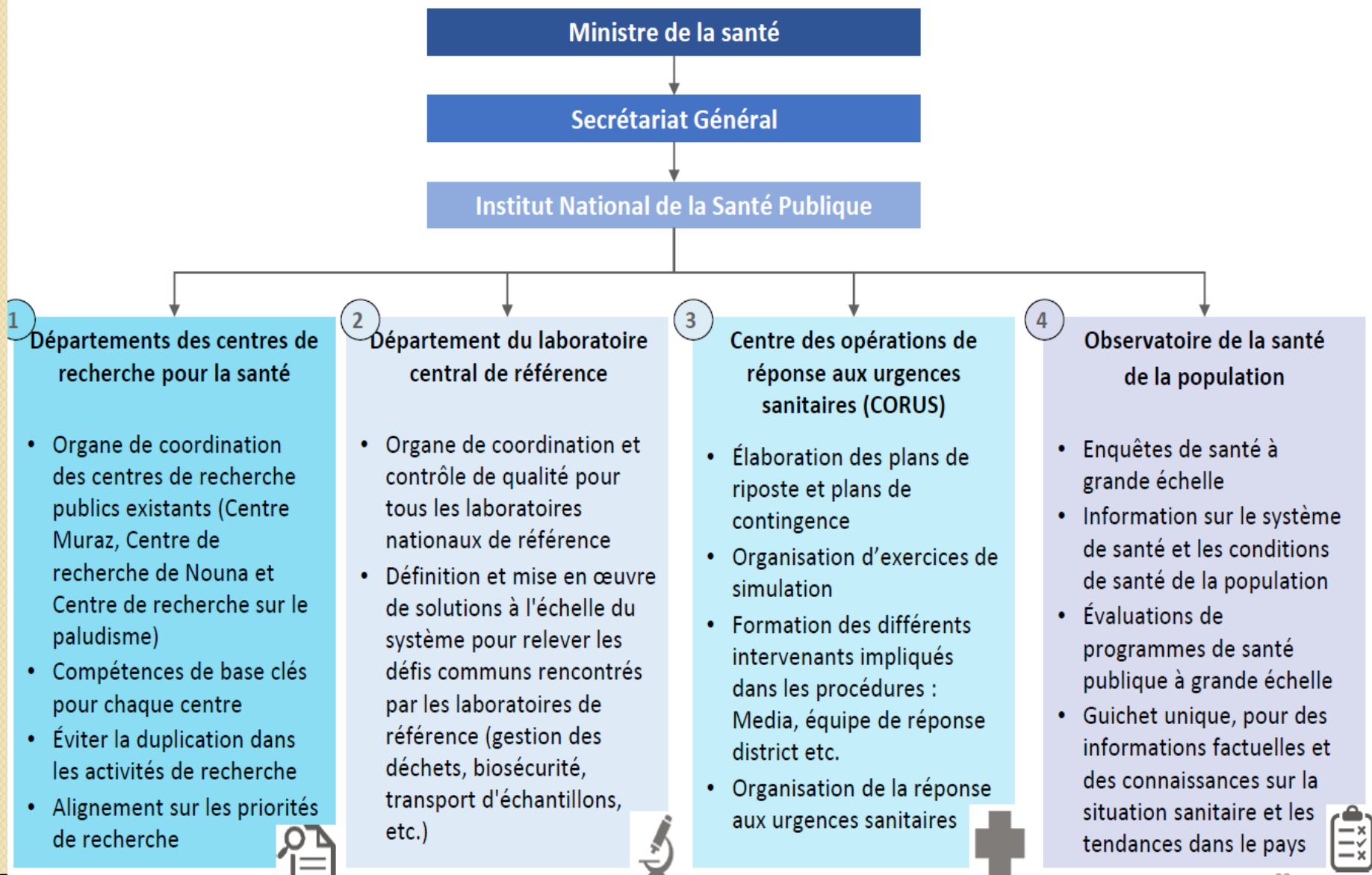
Methodology
Expertise

Framework

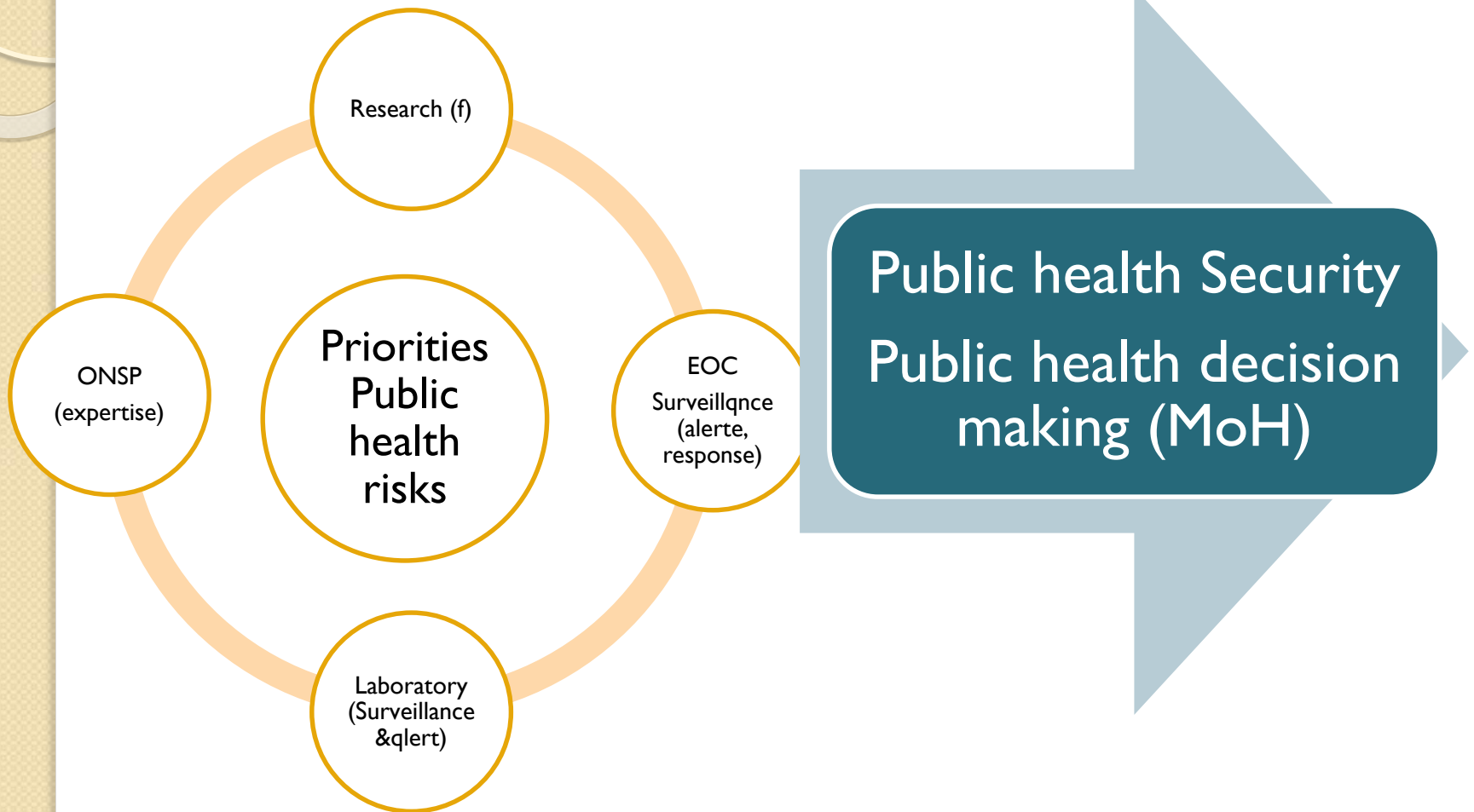
Laboratory system
and networking

Research and
Training

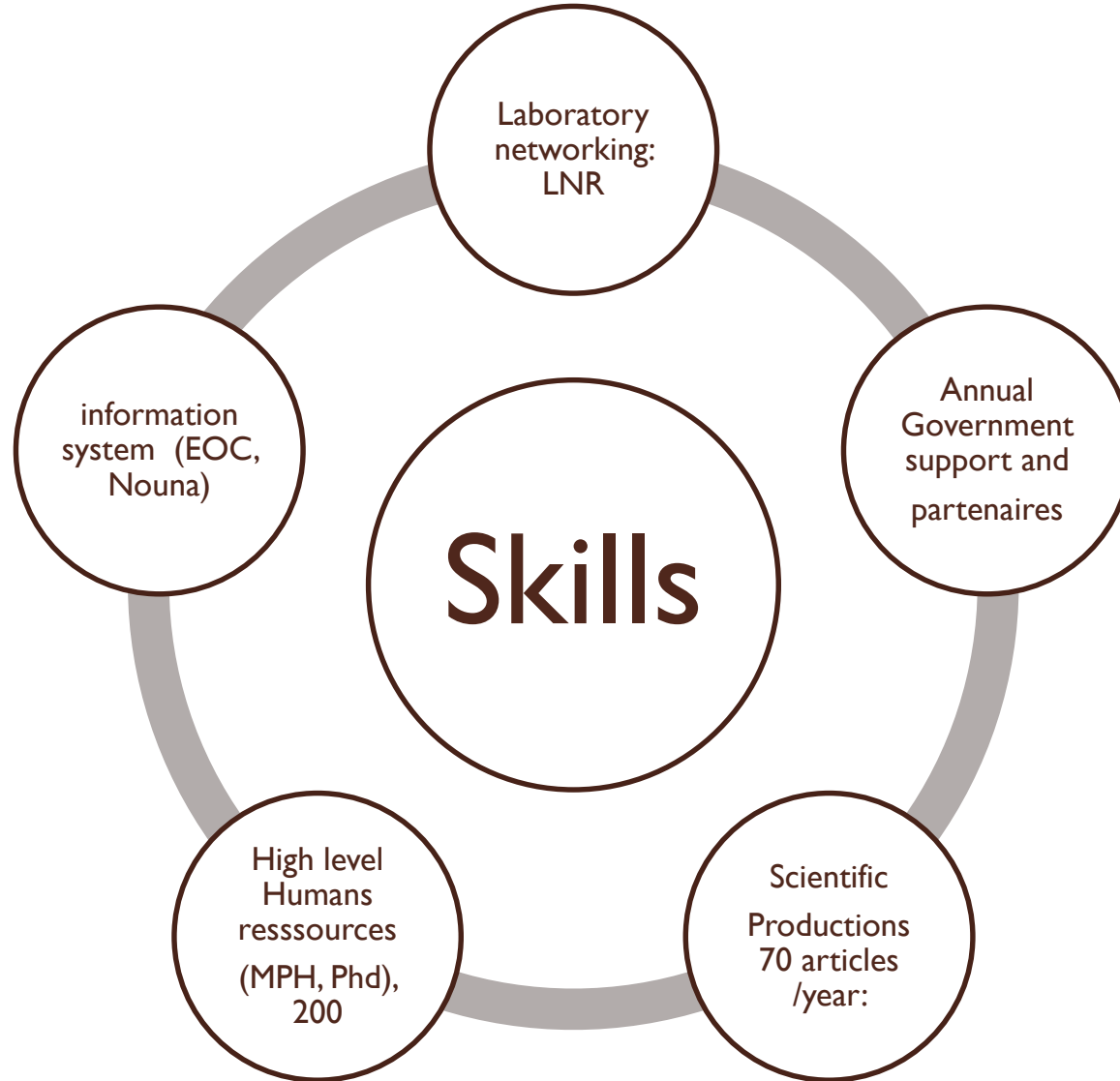
Creation and statute: fusion-absorption and creation of PH infrastructures



Theories and coherence for public health decision and change



NPHI skills



Success factors and best practices

- Political will
- Key role of the prefiguration committee
- National recognition : Decree of creation
- Change management : Communication/response to questions and concerns
- Work toward internal and external ownership
- Develop a participatory strategic plan early on:
 - Internal and external involvement in the process

Success factors and best practices

- High involvement of stakeholders
- Encouraging collaborators engagement – empowering
- Research centers specialization
- Partnership and networking : learning from others, peer-to-peer support
- Culture of visibility : quick and progressive national introduction of NPHI development

Challenges

- Staff retention
- Adapting training curricula to new concept of emergency PHR
- Working in the changing context : security, political, environment

Highlights events





Bulletin d'Informations de l'Institut National de Santé Publique



Thanks

Site WEB : www.insp.gov.bf