

Sustainable Investment in Health: A Case Study from Wales

Dr Quentin Sandifer

Presentation to IANPHI Annual Meeting

Addis Ababa

5 December 2019



GIG
CYMRU
NHS
WALES

Iechyd Cyhoeddus
Cymru
Public Health
Wales

World Health Organization
Collaborating Centre on
Investment for Health and Well-being

The World Health Organization logo, featuring a caduceus (a staff with two snakes entwined around it and wings at the top) in the center, surrounded by a laurel wreath. The logo is partially obscured by the text above it.

The case for sustainable and fair investment for health and well-being is stronger than ever

Globally, in Europe, the UK and Wales

- Doing business as usual is unsustainable with high costs for individuals, families, communities, society, the economy and the planet
- Investing in health and well-being, particularly in prevention and early intervention, enables sustainable development and prosperity for all



Cost to society and the economy

If obesity rates continue to rise, the cost to society and the economy in Wales could reach

£2.4 billion



Estimated costs of health inequalities to the Welsh economy

£1.8 - £1.9 billion productivity losses per year

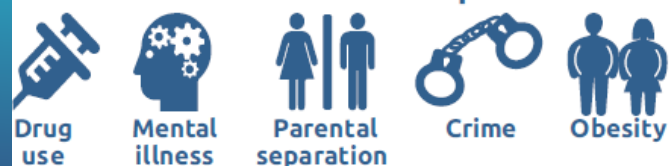
£1.1 - £1.8 billion lost taxes and welfare costs per year

Bringing social and economic returns**

Investing in **targeted interventions** + **universal childcare** + **paid parental leave** in Wales

could save **£72 billion** over 20 years

from the costs of social problems



Every **£1** invested in **parenting programmes to prevent conduct disorder** saves the NHS in England **£8** over 6 years



in health care, education and criminal justice costs

Synergy on Global – European – National – Organisational level



HEALTH EQUITY STATUS REPORT INITIATIVE

World Health Organization
REGIONAL OFFICE FOR EUROPE

Regional Committee for Europe
69th session
Copenhagen, Denmark, 16-19 September 2019

EUR/R/C69/R5
17 September 2019
190349
ORIGINAL: ENGLISH

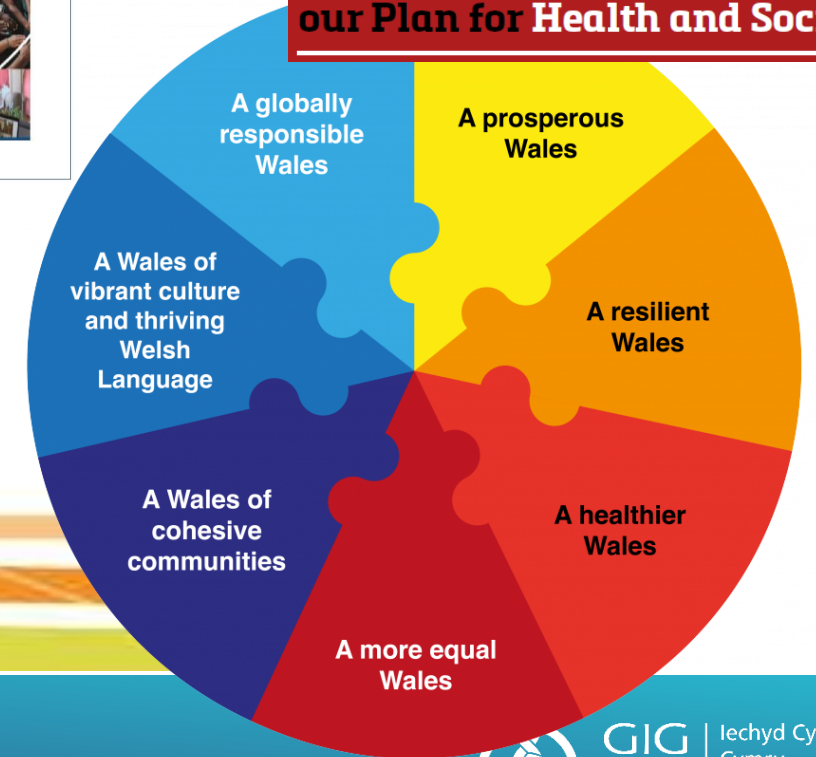
Resolution

Accelerating progress towards healthy, prosperous lives for all, increasing equity in health and leaving no one behind in the WHO European Region

'Prosperity For All' - the national strategy

The strategy sets out how we will deliver for Wales during this term - and set long-term foundations for the future.

A Healthier Wales: our Plan for Health and Social Care



World Health Organization
Regional Office for Europe

HEALTH EVIDENCE NETWORK SYNTHESIS REPORT 51
Investment for health and well-being: a review of the social return on investment from public health policies to support implementing the Sustainable Development Goals by building on Health 2020

Mariana Dyakova | Christoph Hameltmann | Mark A. Bellis | Evodie Benier | Charlotte N.B. Gray | Kathryn Ashton | Anna Schwappach | Christine Clar

World Health Organization
Regional Office for Europe

Highlights from the Health Evidence Network synthesis report 51
Investment for health and well-being
A review of the social return on investment from public health policies to support implementing the Sustainable Development Goals by building on Health 2020

Dyakova M, Hameltmann C, Bellis MA, Benier E, Gray C, Ashton K, Schwappach A, Clar C

GIG CYMRU NHS WALES | Iechyd Cyhoeddus Cymru Public Health Wales

Making a Difference:
Investing in Sustainable Health and Well-being for the People of Wales
Executive Summary
2016

World Health Organization
Collaborating Centre on
Investment for Health and Well-being

GIG CYMRU NHS WALES | Iechyd Cyhoeddus Cymru Public Health Wales

Sustainable
solutions



Challenges

What does it mean to ‘make the case for investment’ and why?

- ✓ **Change the narrative**

From spending and funding to **investment**

- ✓ **Show the wider returns / benefits**

Social + Economic + Environmental

- ✓ **Making the case = advocating for**

Using the **universal language** of numbers, visuals, stories – better communication

- ✓ **Working across sectors and levels**

Investing not only in the health care sector but across different sectors and levels

prevention approach + integration of care

Two brief examples

ACES

Adverse Childhood Experiences (ACEs) in Wales

Welsh Adverse Childhood Experiences (ACE) Study

Adv...
Exp...
and th...
health...
In the...

ALCOHOL USE, DRUG USE, VIOLENCE, SEXUAL BEHAVIOUR, INCARCERATION, SMOKING AND POOR DIET

Health Harming

Welsh Adverse Childhood Experiences (ACE) Study

Adv...
Exp...
and th...
with...
in th...
popu...

Welsh Adverse Childhood Experiences (ACE) Study

Mental Well-being

Welsh Adverse Childhood Experiences (ACE) Study

Adv...
Exp...
and th...
with...
health...
Welsh...

Welsh Adverse Childhood Experiences (ACE) Study

Chronic Disease

PRIFYSGOL BANGOR

GIG CYMRU NHS WALES

Iechyd Cyhoeddus Cymru Public Health

Sources of resilience and their moderating relationship with harms from adverse childhood experiences

Report 1: Mental illness

Welsh Adverse Childhood Experiences and Resilience Study

Resilience Mental Illness

Understanding the prevalence of adverse childhood experiences (ACEs) in a male offender population in Wales

The Prisoner ACE Survey

Kat Ford, Emma R. Barton, Annemarie Newbury, Karen Hughes, Zoe Bezeczyk, Janine Roderick, Mark A. Bellis

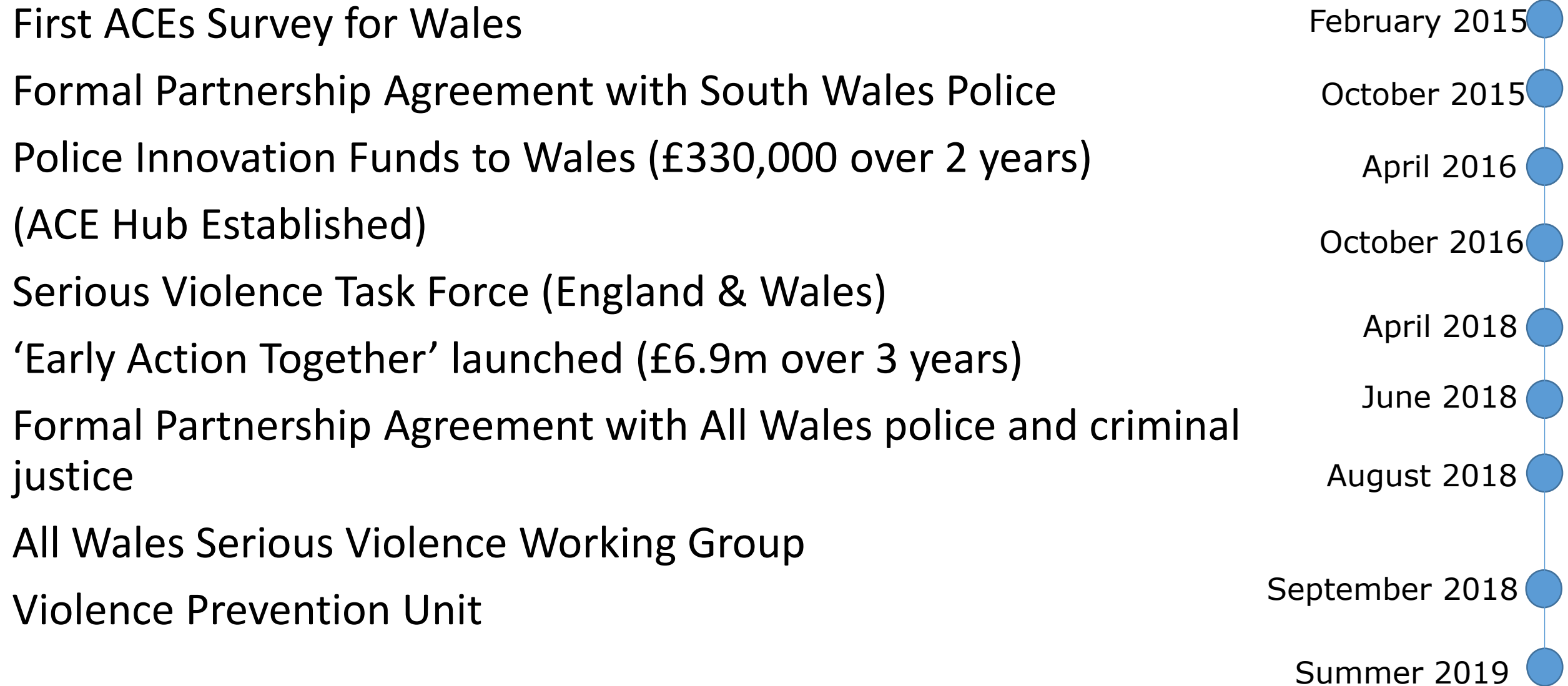
Prisoner Population

Voices of those with lived experiences of homelessness and adversity in Wales: Informing prevention and response

2019

Homelessness and Adversity

Time Line for Development of Public Health Approaches to Violence Prevention in Wales





GIG
CYMRU
NHS
WALES

Iechyd Cyhoeddus
Cymru
Public Health
Wales

***Working to achieve a healthier
future for Wales***

The Journey So Far

- ❖ *A Healthier Wales*: Health Strategy emphasising prevention and early intervention and enabling policy context in Wales
- ❖ *Burden of Disease* in Wales undertaken by us in 2018 and additional evidence series
- ❖ Advice to Government on an investment proposal for a step change in prevention to improve population health in Wales 2018
- ❖ 2019: £10m prevention and early years allocation into the health system and partners aligned to prevention priorities in *Building a Healthier Wales*
- ❖ Request from Minister for Health and Social Services to tackle £9bn NHS allocation and shift to prevention
- ❖ March 2019: galvanising event cross sector, 5 priorities agreed
- ❖ April 2019: Minister establishes *Building a Healthier Wales Coordination* Group
- ❖ Aligning system levers and drivers for managed shift to prevention





**Thank you for listening.
Any questions?**