

Building Effective Networks: Strategies for Partnership Mapping and Stakeholder Engagement in NPHIs

Bhakti Hansoti MBChB, MPH, PhD

Johns Hopkins Bloomberg School of Public Health

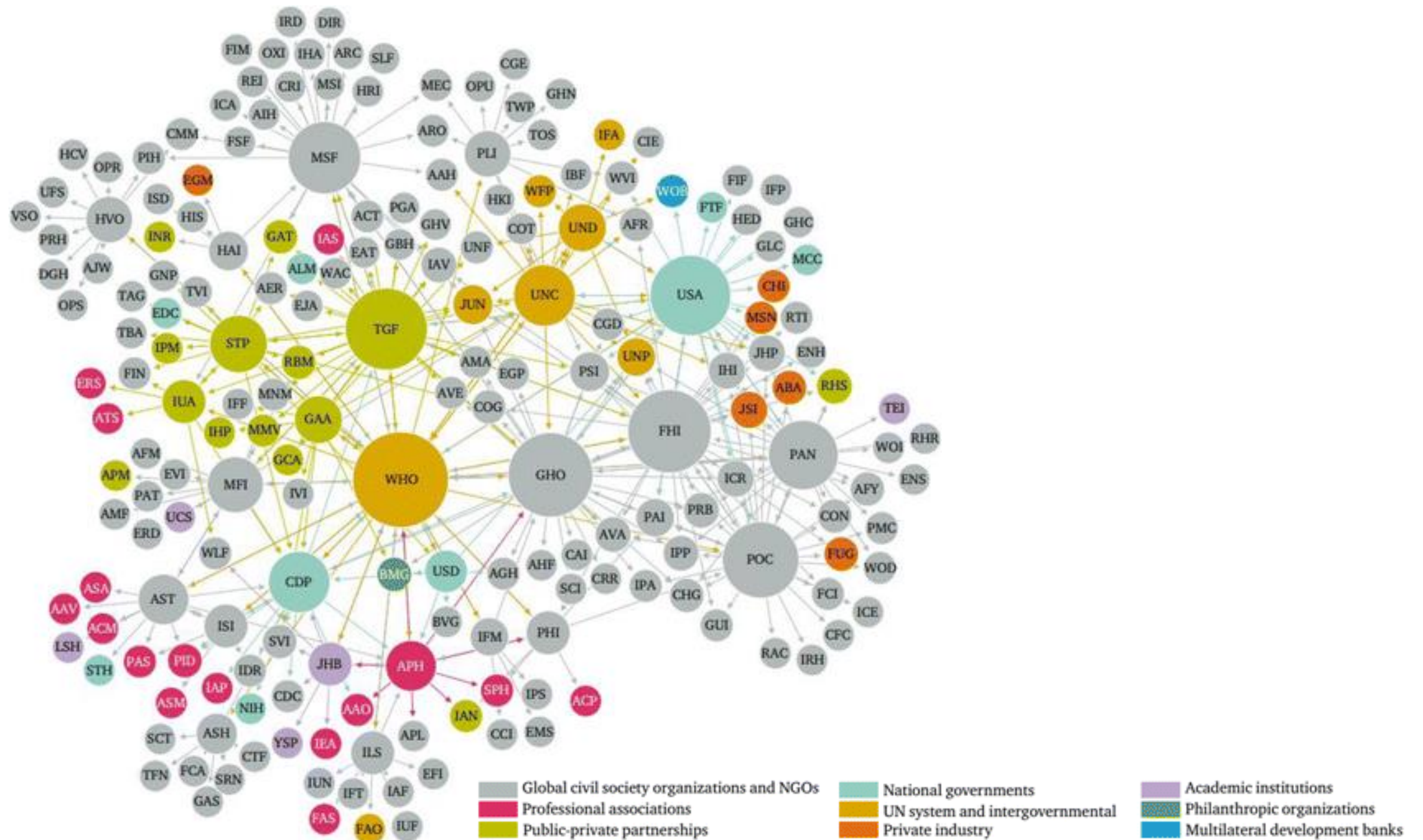
Partnerships

‘With rare exceptions, all of your most important achievements on this planet will come from working with others—or, in a word, partnership.’

- **Dr. Paul Farmer**

‘There can be no doubt: partnership and collaboration are a critical way forward to support country leadership in addressing the overlapping challenges and crises that are preventing millions of women, children and adolescents to survive and thrive.’

- **Dr. Juan Pablo Uribe, World Bank**



Importance of Strategic Engagement

Risks of not Engaging

- X Unclear, unrealistic, or vague goals
- X Uncertainty of project outcomes
- X Reactive vs proactive operations
- X Siloed thinking
- X Duplication of efforts and resources

Benefits of Engagement

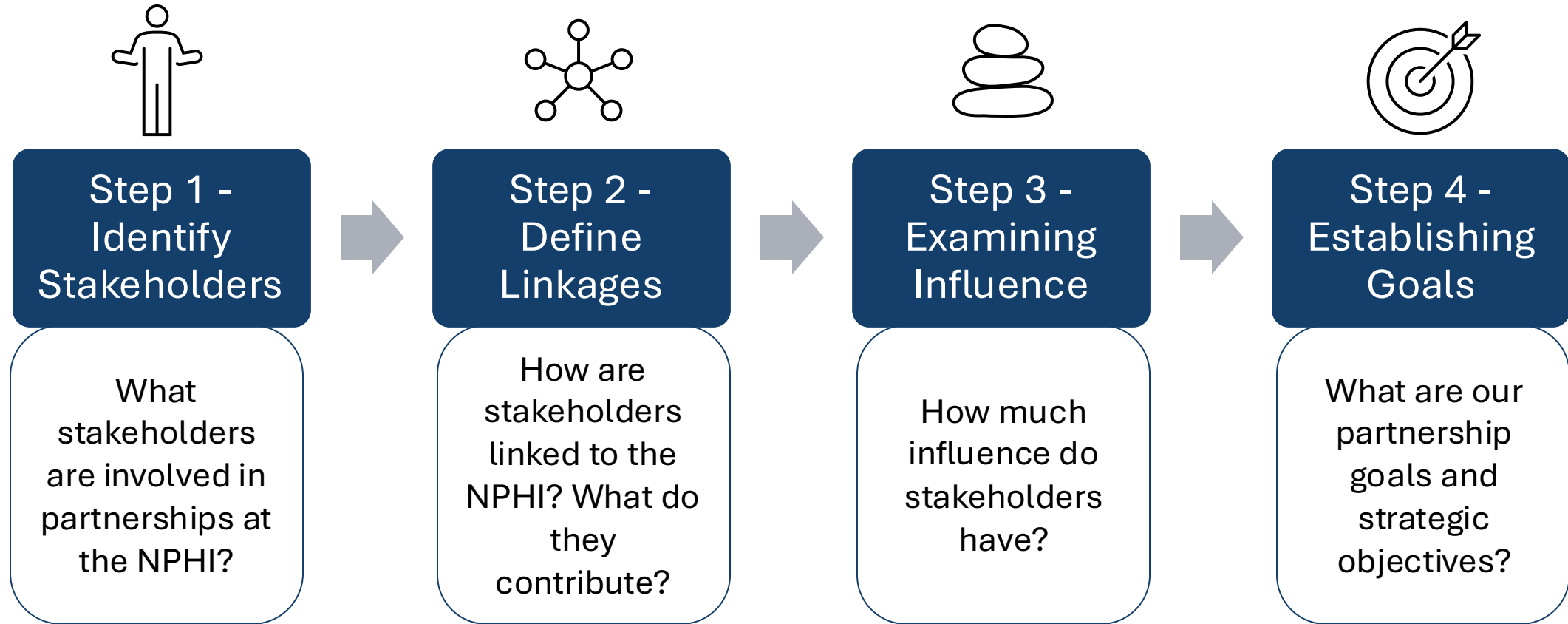
- ✓ Well defined goals and outcomes
- ✓ Increased trust and confidence between parties
- ✓ Proactive planning and operations with stakeholders and internally
- ✓ Collaborative thinking and planning

Building Capacity for NPHIs

Project Framework



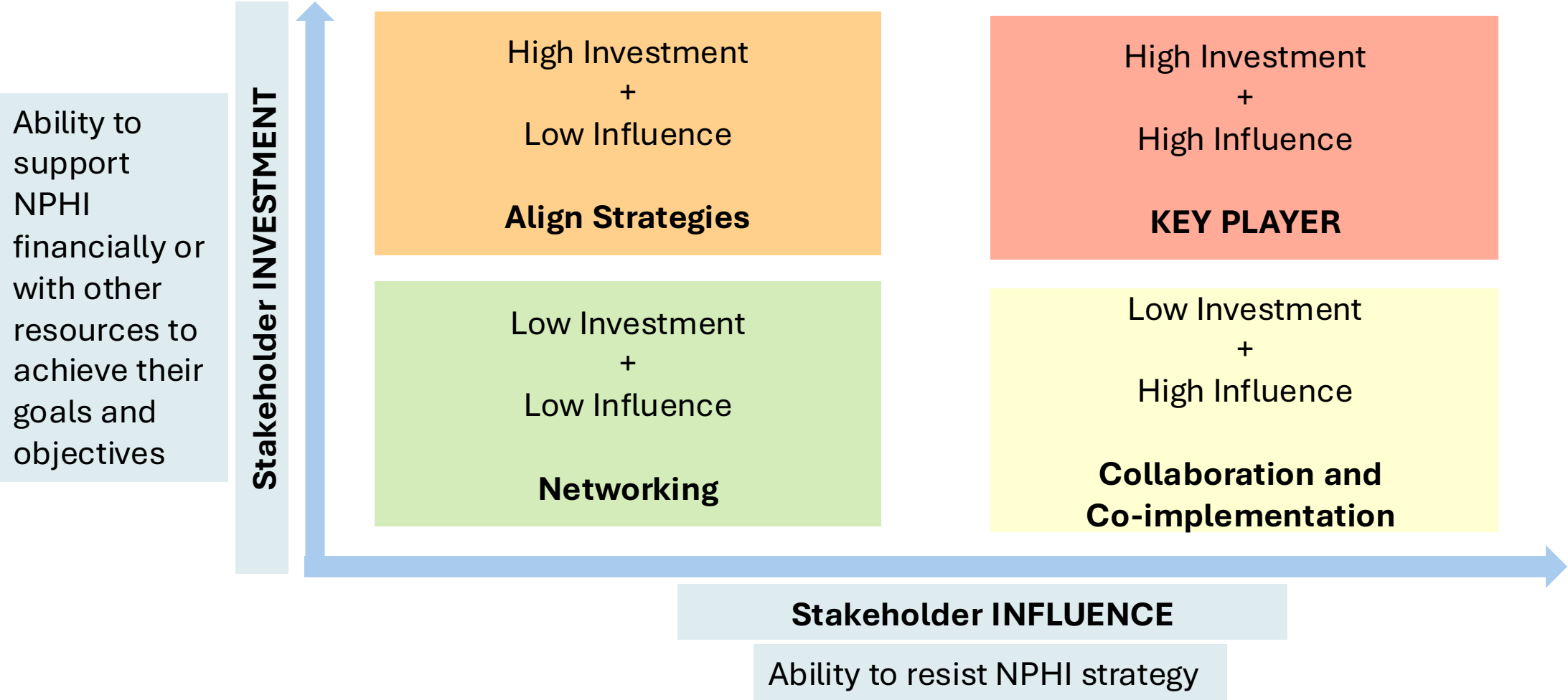
The Mapping Process – JHU’s Approach



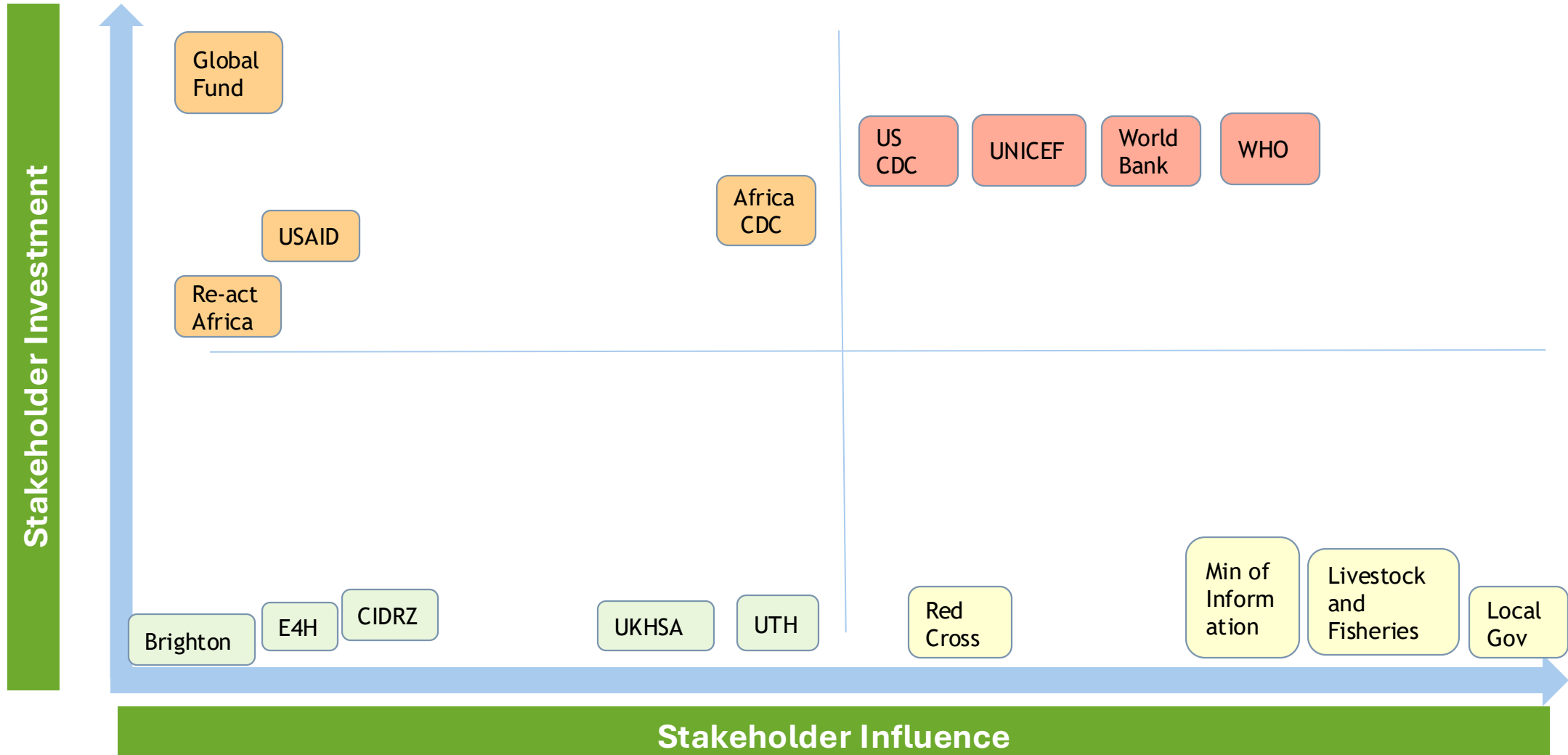
Step 2 – Define Linkages (Net-Map)

- **Funding** - Financial support for projects, programs, and/or initiatives
 - *i.e., program/project funding; reagents; laboratory supplies*
- **Information** - Access to or the transfer of information, including data
 - *i.e., raw data; database sharing; research; best practices*
- **Technical** - Technical assistance and/or recommendations offered around specific programs
 - *i.e., specific support to EPR, LSN, SDI, etc. programs/projects*
- **Capacity** - Support to improve skills, resources, and abilities to operate and respond
 - *i.e., training; logistics; human resource capacity*

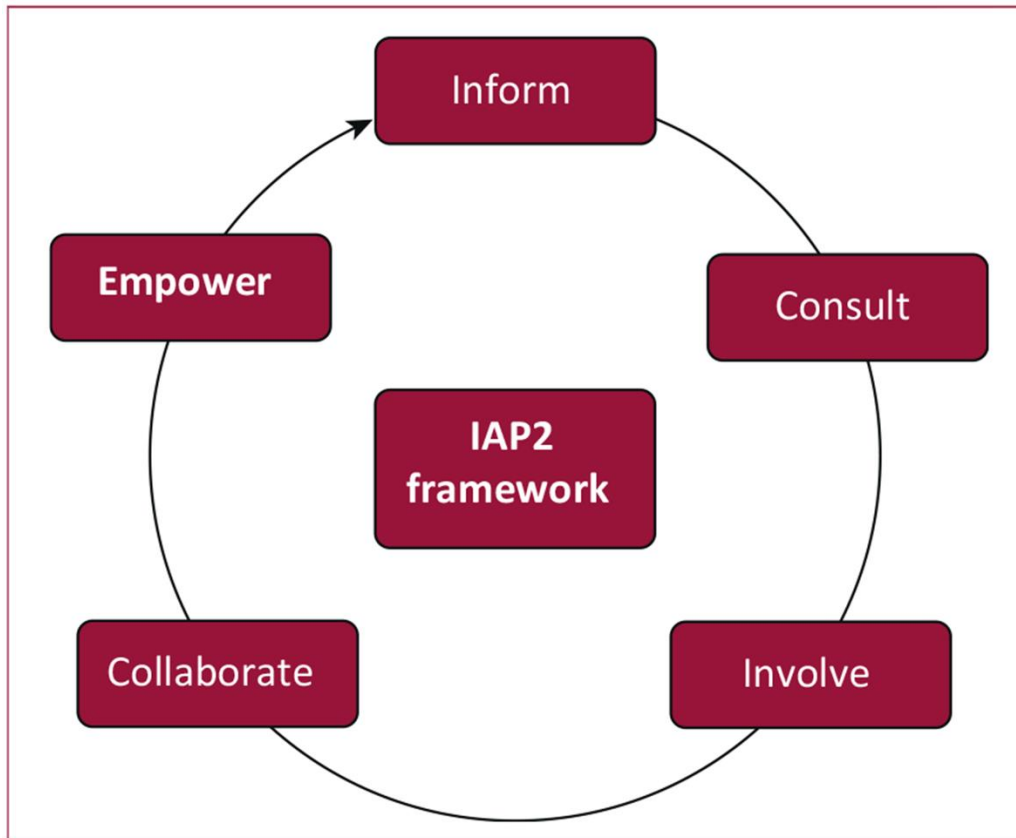
Step 3 – Examining Influence



Example Matrix



Step 4 – Establishing Engagement Goals



- International Association of Public Participation (IAP2) Framework
 - **Inform:** provide stakeholders with information
 - **Consult:** obtain stakeholder feedback
 - **Involve:** understand and consider stakeholder goals and concerns
 - **Collaborate:** participation of stakeholders in planning and design
 - **Empower:** stakeholders have decision making power – need to ensure they are informed
- **COMMUNICATION IS KEY**

Outcomes



Network map of current and potential NPHI partners



Understanding of stakeholder priorities



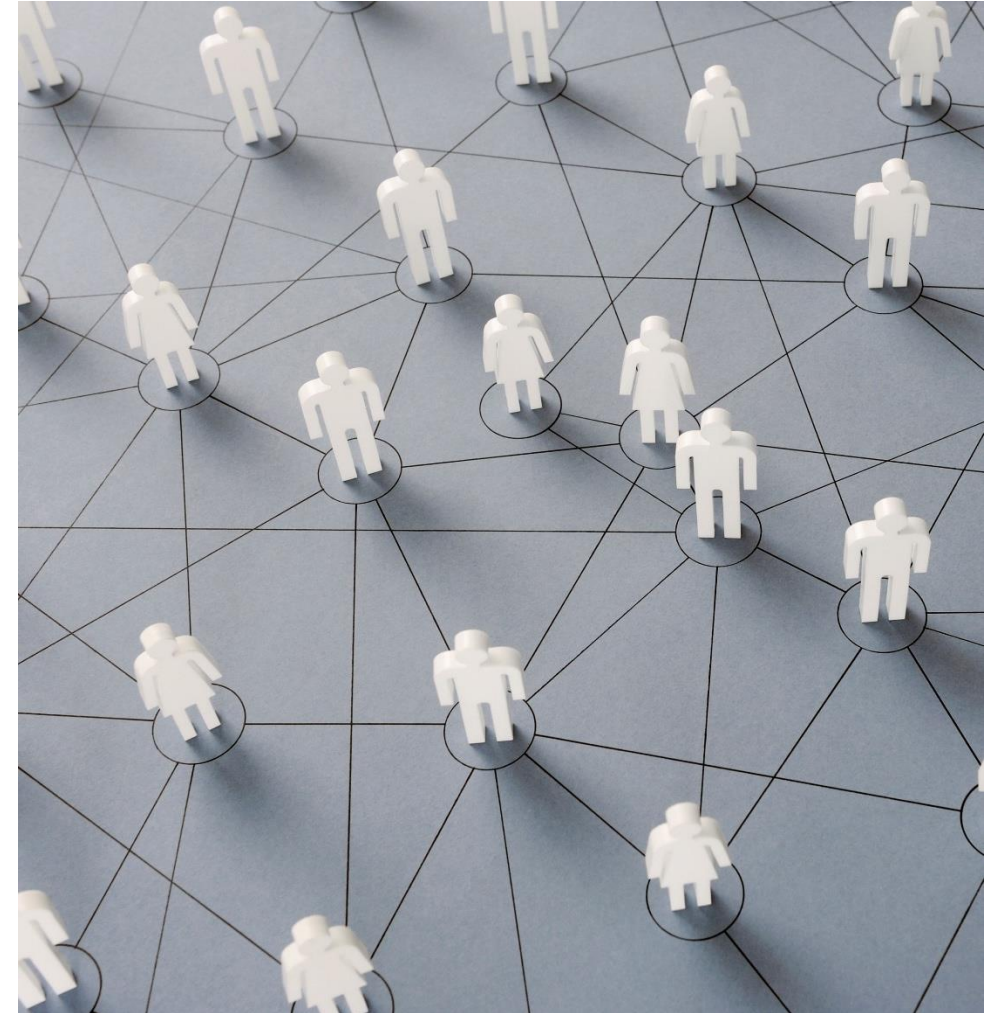
Strategy for communicating to various types of partners/stakeholders



A draft strategic Partnership Action Plan

Partner and Stakeholder Engagement

- Focus on strengthening relationships with stakeholders and partners to influence a variety of outcomes through:
 - Consultation
 - Communication
 - Negotiation
 - Compromise
 - Relationship Building



Thank You