



Special Program on Planetary Health

Dr. Horacio Riojas Rodríguez
Mtra. Giovanna S. Mercado Prado
Mtra. Alma Liriet Alvarez Castro

November, 2024



Instituto Nacional
de Salud Pública





Objective of the Program

To establish the areas of planetary health at the INSP with the implementation of **key research, teaching, public policy, advocacy and university extension** activities to contribute to the exercise of the right to human health and a healthy environment within the framework of equity and sustainability



Instituto Nacional
de Salud Pública



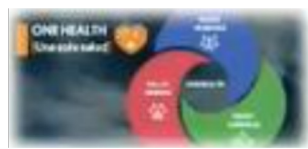
Salud planetaria, una nueva salud pública global

Una nueva perspectiva de la salud pública global que integra la salud humana, animal y ambiental.

El concepto de salud planetaria surge como una respuesta a los desafíos globales de salud pública que requieren un enfoque integral que considere la salud humana, animal y ambiental.

Salud planetaria

Una nueva perspectiva de la salud pública global que integra la salud humana, animal y ambiental.



Red ESPESES
Red de Especialistas en Salud Planetaria

Presentación de la Red para la Evaluación de la Salud Planetaria en Entornos Académicos Especiales (ESPESES)

Estamos en un planeta que enfrenta sus más grandes desafíos: el calentamiento global, la pérdida de biodiversidad, la contaminación del aire y del agua, la deforestación, la pérdida de suelos fértiles, la contaminación de los océanos y el uso excesivo de los recursos naturales. Estos desafíos están interconectados y requieren un enfoque integral para su solución.

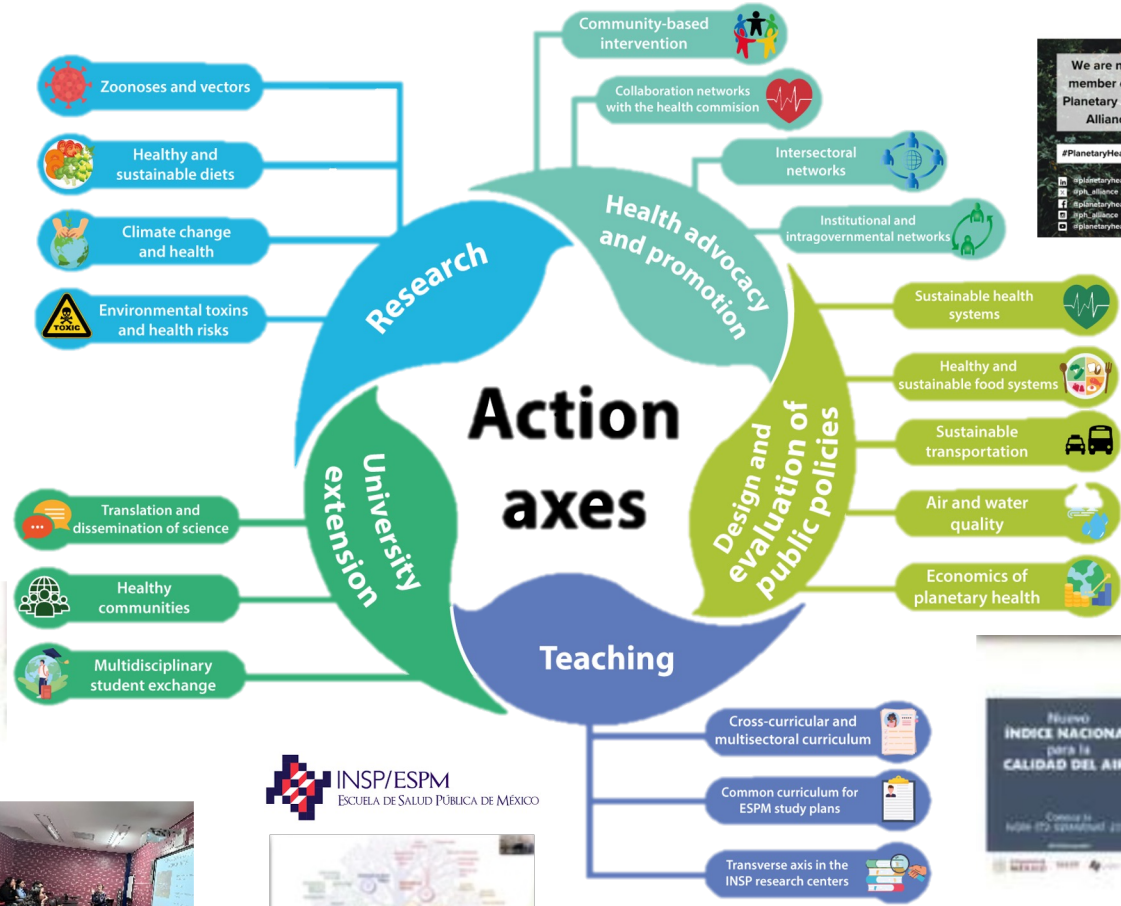
El primer objetivo es establecer la red para trabajar con la Red para la Evaluación de la Salud Planetaria en Entornos Académicos Especiales (ESPESES).

El primer objetivo es establecer la red para trabajar con la Red para la Evaluación de la Salud Planetaria en Entornos Académicos Especiales (ESPESES).

El primer objetivo es establecer la red para trabajar con la Red para la Evaluación de la Salud Planetaria en Entornos Académicos Especiales (ESPESES).



INSP/ESPM
ESCUELA DE SALUD PÚBLICA DE MÉXICO





Special Planetary Health Program Website

<https://saludplanetaria.espm.mx/>





Planetary Health, a new global public health

Review article

In press



*This positioning document seeks to explain the **internal and external policy of the INSP** as a leader on the subject that will contribute significantly to the **development of planetary health** both **in the country and in the region** to contribute to the right to human health and a healthy environment in the framework of equity and sustainability*



Instituto Nacional
de Salud Pública

Salud planetaria, una nueva salud pública global

Horacio Riojas-Rodríguez, PhD,⁽¹⁾ Juan A Rivera-Dommarco, PhD,⁽²⁾ Pilar Torres-Pereda, M en Antrop Méd,^(3,4)
Mishel Unar-Munguía, PhD,⁽⁵⁾ Marlene Cortez-Lugo, PhD,⁽¹⁾ Pamela Zúñiga-Bello, D en Ing Amb y Tecn Sust.⁽¹⁾

Riojas-Rodríguez H, Rivera-Dommarco JA,
Torres-Pereda P, Unar-Munguía M,
Cortez-Lugo M, Zúñiga-Bello P.
Planetary health, a new global public health.
Salud Publica Mex. 2024.
<https://doi.org/10.21149/15410>

Riojas-Rodríguez H, Rivera-Dommarco JA,
Torres-Pereda P, Unar-Munguía M,
Cortez-Lugo M, Zúñiga-Bello P.
Planetary health, a new global public health.
Salud Publica Mex. 2024.
<https://doi.org/10.21149/15410>

Resumen

El modelo de desarrollo económico actual ha provocado el deterioro de los sistemas naturales y se ha convertido en la principal amenaza para la salud pública al rebasar diversos límites planetarios de la Tierra; esta trasgresión tiene severas implicaciones para la salud humana y la de otras especies, por ende, se requiere reformular el alcance y la visión de la salud pública y su relación con el mismo modelo de desarrollo. El enfoque de salud planetaria tiene como eje comprender los cambios ambientales, sus efectos en los sistemas naturales y la efectación al bienestar y la salud humana. Por esto, el Instituto de Salud Pública (INSP) de México creó un programa de salud planetaria, cuyos ejes son la

Abstract

The current economic development model has caused the deterioration of natural systems and has become the main threat to public health by exceeding various planetary boundaries of the Earth system, which have severe implications for human health and other species, therefore, it is necessary to reformulate the scope and vision of public health and developing a new model. The interest of the planetary health approach is to understand the environmental changes, their effects on natural systems, and their impact on human health and well-being. For this reason, the National Institute of Public Health (INSP in Spanish) of Mexico created a special program on planetary health, whose axes are transdisciplinary research, teaching, advocacy design, evaluation, and impact on public policies, and strengthening an institutional environmental responsibility program (EcoINSP). This positioning document explains the internal and external policy of the INSP that will contribute significantly both in the country and in the region to health



Planetary health and analysis of syndemics: towards the construction of a new environmental health



Based on the global and national diagnosis, we propose a **comprehensive planetary health strategy**

that, from the community base, addresses the **syndemics** resulting from the synergistic interaction of

environmental, climatic, ecological and social threats.

Salud planetaria y análisis de sindemias: hacia la construcción de una nueva salud ambiental

Fernando Díaz-Barriga, D en B, D en C,⁽¹⁾ Astrid Schilmann, D en C,⁽²⁾ Betzabet Quintanilla-Vega, D en C,⁽²⁾ Gonzalo García-Vargas, D en M, D en C,⁽⁴⁾ Martha MTélez-Rojo, D en C,⁽⁵⁾ María E Gonsebatt, D en C,⁽⁶⁾ Luz M Del Razo, D en C,⁽²⁾ Leonora Rojas-Bracho, D en C,⁽⁷⁾ Horacio Riojas-Rodríguez, D en C,⁽²⁾

Díaz-Barriga F, Schilmann A, Quintanilla-Vega B, García-Vargas G, Téllez-Rojo MM, Gonsebatt ME, Del Razo LM, Rojas-Bracho L, Riojas-Rodríguez H. Salud planetaria y análisis de sindemias: hacia la construcción de una nueva salud ambiental. Salud Publica Mex. 2024. <https://doi.org/10.21149/15637>

Resumen

Las amenazas ambientales, climáticas y ecológicas se han agudizado y representan ahora una triple crisis planetaria. Estas crisis interactúan entre sí y con las condiciones sociales del entorno, lo cual se traduce en un incremento de enfermedades crónicas, en el surgimiento de nuevas enfermedades y en el resurgimiento de otras. En este contexto, se requiere enfoques innovadores y holísticos de salud pública que, desde el diagnóstico comunitario, aborden la construcción de una nueva salud ambiental.

Díaz-Barriga F, Schilmann A, Quintanilla-Vega B, García-Vargas G, Téllez-Rojo MM, Gonsebatt ME, Del Razo LM, Rojas-Bracho L, Riojas-Rodríguez H. Planetary health and syndemic analysis: to the building of a new environmental health. Salud Publica Mex. 2024. <https://doi.org/10.21149/15637>

Abstract

Environmental, climatic, and ecological threats have intensified and now constitute a triple planetary crisis. These crises interact with each other and with the social conditions of the environment, resulting in an increase in chronic diseases, the emergence of new illnesses, and the resurgence of others. In this context, the construction of innovative and holistic approaches to public health is required. Based on the global and national diagnosis, we propose a comprehensive strategy for planetary health that, from the community level, addresses the syndemics resulting from the synergistic interaction of environmental, climatic, ecological, and social threats. This strategy is based on human rights and aims to work for the training of health professionals and the construction of a new environmental health.



Instituto Nacional de Salud Pública



Summer course: Planetary health (July 15-19, 2024)

*The subject focuses on the concepts and components of planetary boundaries from the global to the local, fostering a comprehensive understanding of planetary health and **motivating students to think about holistic solutions at the local level.** The concept of syndemics is incorporated to analyze the synergistic impacts of the environmental and social situation from the local level.*



Instituto Nacional
de Salud Pública

26 participants

Programa de Actualización en Salud Pública y Epidemiología **PASPE 2024** 

Curso "Salud planetaria: nuevo enfoque de salud pública global"

Fecha:
Del 15 al 19 de julio

Docente:
Dr. Horacio Riojas Rodríguez

Modalidad: Presencial en Cuernavaca



¡No te quedes fuera!
Consulta nuestras promociones vigentes

PASPE Mx  educacioncontinua.espm.mx/paspe

Este programa es gratuito, abierto a cualquier perfil profesional. Cuanto mejor sea el perfil mejor será el aprendizaje y los conocimientos en el programa.

INSP/ESPM



Assessment of planetary health in emerging syndemic scenarios (Network ESPESES)

Given the new planetary risks, which arise simultaneously, a comprehensive planetary health strategy is proposed that addresses the syndemics resulting from the synergistic interaction of environmental, climatic, ecological and social threats.



Instituto Nacional de Salud Pública



Características de la Red

- Se basa en una nueva visión de la Salud Ambiental
- Entiende que los problemas de la crisis ambiental actual están interrelacionados
- Se basa en la colaboración para temas específicos y colabora concretos
- Se interesa en:
 - Investigación transdisciplinar
 - Formación de recursos humanos con un
 - Posicionamiento frente a temas relevantes

Meetings

La Escuela de Salud Pública de México te invita a la videoconferencia:

Red ESPESES: Crisis climática y atmosférica

Participan:

- Dra. Rosa Elena Parra Tapia (IMSS Biomédica)
- Dr. Víctor Torres Maca (CIVELCO)
- Dra. Marilene Cordero Lago (CISP/INSP)
- Dra. Paulina Fariñas Saura (CISP/INSP)
- Dr. Horacio Rojas Rodríguez (CISP/INSP)

Fecha: **Jueves 30 de mayo, 2024 11:00 horas**

Webinars

Título: SALUD PLANETARIA Y ANÁLISIS DE SINDEMIAS: HACIA LA CONSTRUCCIÓN DE UNA NUEVA SALUD AMBIENTAL

Title: PLANETARY HEALTH AND SYNDEMIC ANALYSIS: TO THE BUILDING OF A NEW ENVIRONMENTAL HEALTH

Título breve: SALUD PLANETARIA Y ANÁLISIS DE SINDEMIAS

Autores: Fernando Díaz-Barriga¹, Astrid Schönbagg², Betzabé Quintanilla-Vega³, Gonzalo García-Vargas⁴, Martha M. Yépez-Rojas⁵, María E. Spodis⁶, Luz M. del Razo⁷, Leonora Rojas-Bracho⁷, Horacio Rojas-Rodríguez^{7*}

Adscripción:

- 1) Centro de Investigación Aplicada en Ambiente y Salud, Universidad Autónoma de San Luis Potosí, San Luis Potosí, México.
- 2) Dirección de Salud Ambiental, Centro de Investigación en Salud Poblacional, Instituto Nacional de Salud Pública, Cuernavaca, Morelos, México.
- 3) Departamento de Toxicología, Centro de Investigación y Estudios Avanzados del Instituto Politécnico Nacional, Ciudad de México, México.
- 4) Facultad de Medicina, Universidad Juárez del Estado de Durango, Durango, México
- 5) Centro de Investigación en Nutrición y Salud, Instituto Nacional de Salud Pública, Cuernavaca, Morelos, México.
- 6) Departamento de Medicina Genómica y Toxicología Ambiental, Instituto de Investigaciones Biomédicas, Universidad Nacional Autónoma de México, Ciudad de México, México.
- 7) Col

Paper

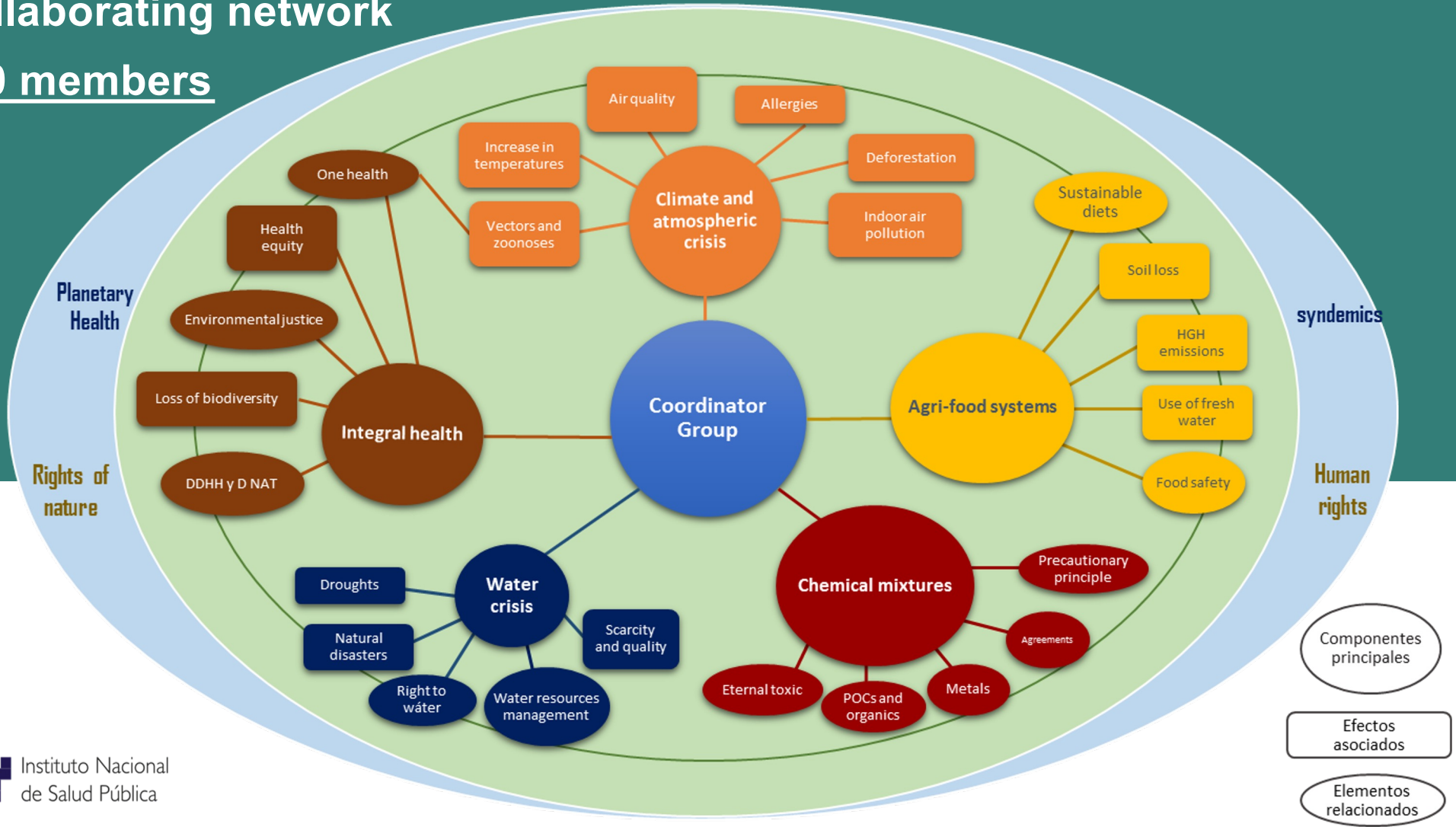
Evaluación de la Salud Planetaria en Escenarios Sindémicos Emergentes

Red Espesies

Dissemination

Collaborating network

140 members





We are now a member of the Planetary Health Alliance!

#PlanetaryHealth

- @planetaryhealthalliance
- @ph_alliance
- @planetaryhealthalliance
- @ph_alliance
- @planetaryhealthalliance168



The Planetary Health Alliance is a consortium of more than 450 universities, non-governmental organizations, research institutes, and government entities from more than 75 countries around the world committed to understanding and addressing global environmental change and its health impacts.

Proposal of contents for universities (in development) with the Red ESPEIES based on The Planetary Health Education Framework

THE PLANETARY HEALTH EDUCATION FRAMEWORK



Editors

Carlos A. Faerron Guzman
Teddie Potter



UNIVERSIDAD AUTÓNOMA DEL ESTADO DE MORELOS



UAEM | Universidad Autónoma del Estado de México



UNISTMO



Successful examples



Institutional environmental events



Campaigns for the surrounding population



Environmental education



Air monitor



Dissemination at conferences

Horacio Riojas Rodríguez, Giovanna Stephanie Mercado Prado, Claudia Patricia Flores Ayala **LaJornada**

Conversaciones de salud pública

Salud planetaria: la nueva visión de salud pública para la preservación del ambiente y la vida

Dissemination in local media

Reduce tu impacto ambiental en eventos institucionales

Fruita de temporada, Galletas o aperitivos de productores locales, Vasos, tazas y platos reutilizables, Cubiertos reutilizables.

Prohibition of plastic bottles at institutional events



Project Evaluation of an action plan for the management of heat-related health effects in Chiapas, Mexico



CISP
Environmental
Health



CRISP
Community Health and
Environment



Wild Blue Evaluation



Co-applicants
East Carolina University



Collaborators



Florida State University



ICACC-UNAM



UNAM-PINCC
Climate Change Research
Program



Collaborators
Ohio State
University

Meeting with parents





Design of the Early Warning System (EWS)



Implement an early warning system (EWS) and health surveillance with the population to identify and respond to heat stress in the communities of the Soconusco Region.

HEALTH DATA COLLECTION

INSTITUTIONALS



AT COMMUNITY LEVEL
Collecting heat-attributable health information Knowledge, Attitudes and Practices (KAP) Surveys

CLIMATOLOGICAL DATA



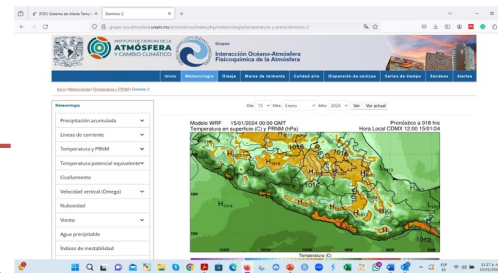
Heat stress indicators

Meteorological data
UNAM Monitoring of community weather stations

DATABASE INTEGRATION



PREDICTIONS AND PROJECTIONS UNAM WRF MODEL



INTERVENTION



CO-DESIGN INTERVENTION STRATEGIES EDUCATIONAL



Position on climate change and health policies in Mexico

*Proposal to federal
and state authorities*









- 1 Include the **climate change and health** as an important issue of the **National Health Program 2024 – 2030**.
- 2 Update and incorporate **health risks associated with climate change** into the Specific Action Programs 2024-2030.
- 3 Update the **diagnosis of the vulnerability** of the current and future strategic **infrastructure of the health sector** to face the climate change.
- 4 Update the National, State and Municipal **Climate Change Action Programmes**, including **vulnerability assessment of risks to human health**.
- 5 **Locate high-risk regions** that present epidemics due to environmental and social factors.
- 6 Reactivate the **Intersecretarial Commission on Climate Change** with the active **participation of the health sector** (researchers/experts on the subject).

Position on climate change and health policies in Mexico

*Proposal to federal
and state authorities*



-  **7** Implement health prevention measures under the approach of **nature-based climate action solutions**.
-  **8** Design a **Greenhouse Gas Mitigation Program** for the health sector.
-  **9** Develop and implement an **early warning system for diseases associated with climate change**, in collaboration with the National Meteorological System and the General Directorate of Epidemiology.
-  **10** **Strengthen the capacities of the health sector** and coordination with other sectors to respond to **emergencies related to extreme events**.
-  **11** Develop a **training program on climate change and health** for physicians, nurses and other health specialists.
-  **12** Incorporate the **climate change** component, its interaction with atmospheric pollutants and its impact on health **into the Air Quality Management Programs**.

Position on climate change and health policies in Mexico

*Proposal to federal
and state authorities*



- 13** Incorporate **knowledge and experiences from communities** and collaborate with organizations to develop alternatives for adaptation and **solutions to climate change**.
- 14** Align the **Transversal Annex of the Federation's Expenditure Budget on Climate Change** (budgetary instrument) with the **Special Programme on Climate Change**.
- 15** Allocate **funds for research into climate change and health**, effects on vulnerable populations and interventions to reduce risks.
- 16** Develop a **monitoring mechanism** for international agreements on climate change and health.

*We are convinced that a national policy on this issue will bring **benefits to the well-being of the population in the short, medium and long term, as well as to future generations.***



Seminar: Planetary Health and Complex Systems.

Organized by the Integrated Health node.



Red ESPESES

Seminario: Salud Planetaria y Sistemas Complejos.

Objetivo:

Reflexionar sobre los fundamentos epistémicos y teóricos del enfoque de salud planetaria y construir una definición teórico práctica, propia para la red ESPESES.

Coordinadores:

Dr. Horacio Riojas Rodríguez
Dr. Benjamín Ortiz Espejel

Sesiones:

Miércoles: 6 y 20 de noviembre, 4 de diciembre, 8 y 22 de enero.
Horario: 17 - 19 hrs. (Centro de México).

Modalidad virtual:

Acceso Zoom
ID de reunión: 539 047 0741
Código de acceso: 556857

SE EXTENDERÁ CONSTANCIA DE PARTICIPACIÓN

85 participants

Other seminars on

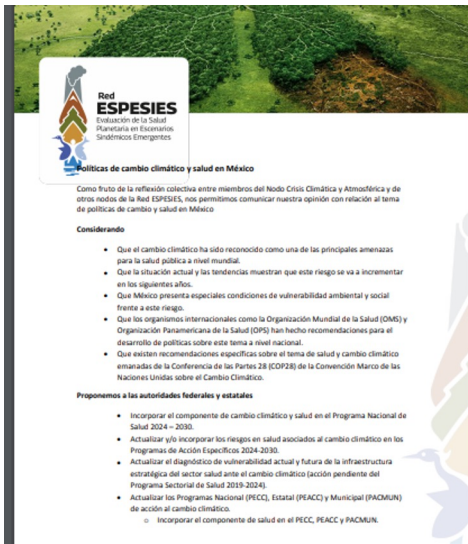
Climate change
Agrosystems and health
Water Scarcity



Instituto Nacional
de Salud Pública



Some of the next steps



Publication of positioning articles



Developing an observatory on Planetary Health



Nacional Pública



Collaboration with a local Market for waste management



Thank You

- ✉ saludplanetaria@insp.mx
- 🌐 <https://saludplanetaria.espm.mx/>
- 📷 [saludplanetaria_insp](#)
- 📘 [SaludPlanetaria](#)
- 📺 [saludplanetariaINSP](#)