



NASA

Ensuring the anchoring of an equity lens in planetary healthcare transitions

Joyce Browne, MD PhD
Associate Professor Global Health & Epidemiology

@JoyceBrowne | J.L.Browne@umcutrecht.nl



Key messages

- We are in the middle of a transformation towards a more sustainable healthcare delivery – and have an opportunity to embed a climate justice and health equity lens
- Climate justice and health equity are connected, and recognizing this will help to shape the next steps
- Unchartered territory, requires collaboration, learning, sharing

Transformation pathways are inherently complex and full of tensions between the 'old ways' and future as we aspire.

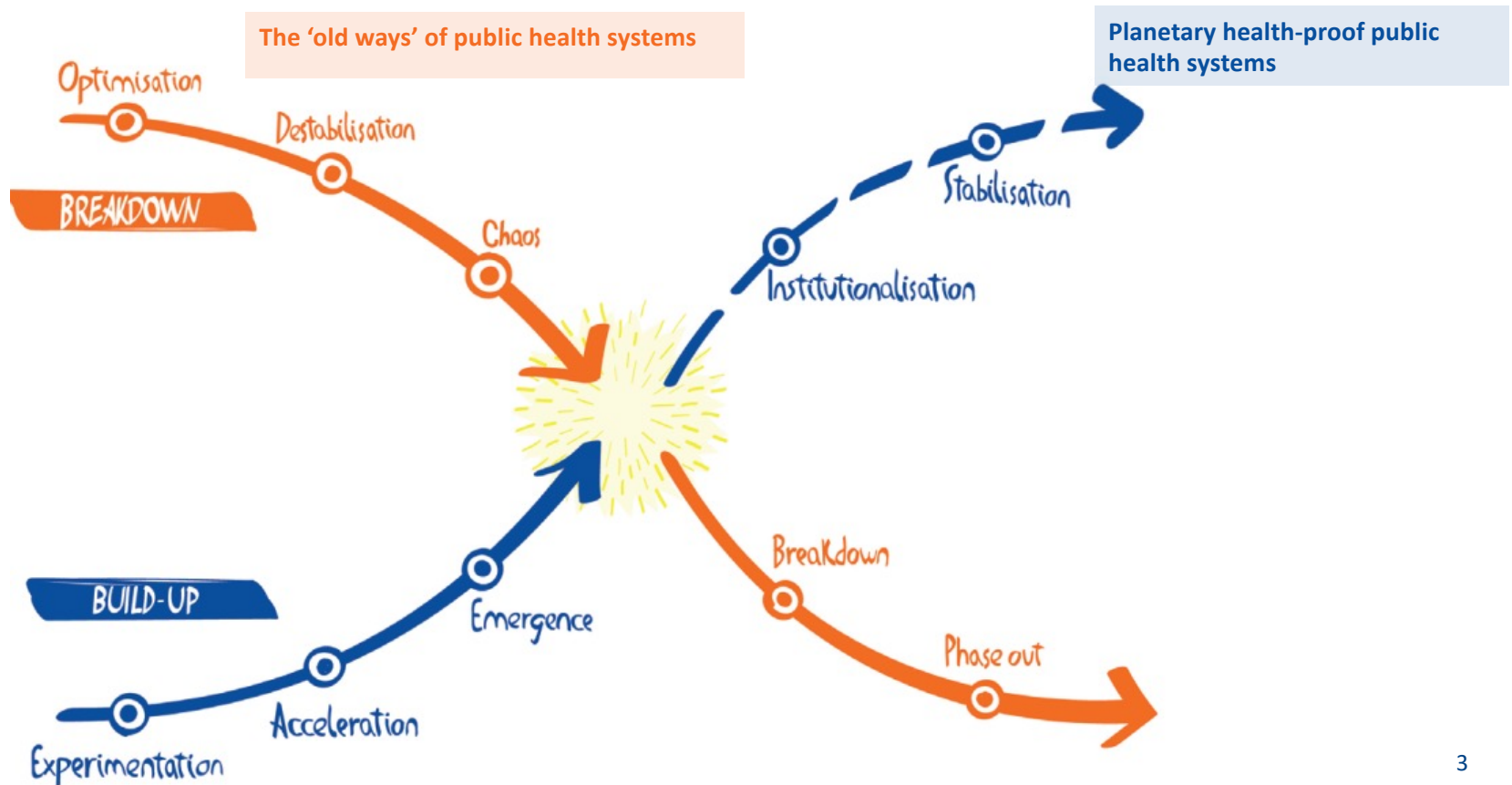


Figure: X-Curve example, The transition to a circular economy in The Netherlands (Bode et al, 2019).

But do we have a clear vision of what a planetary proof public health system can and should be?

How does the foundational principles of climate justice connected with health equity?

Climate justice & health equity

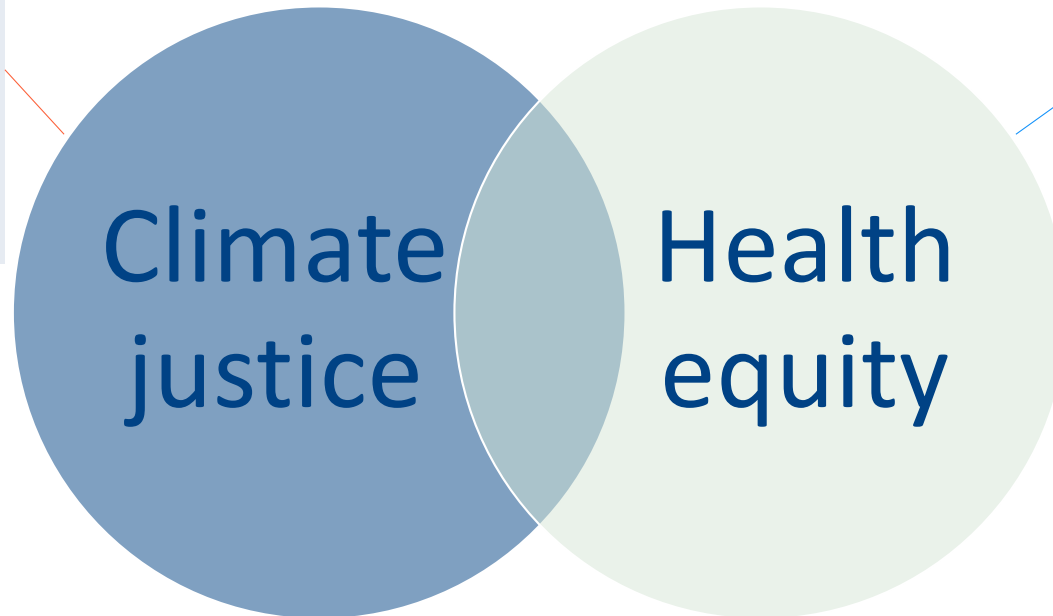


Health
equity

Equal opportunity to health, meaning unfair, avoidable differences have been addressed and mitigated

Climate justice & health equity

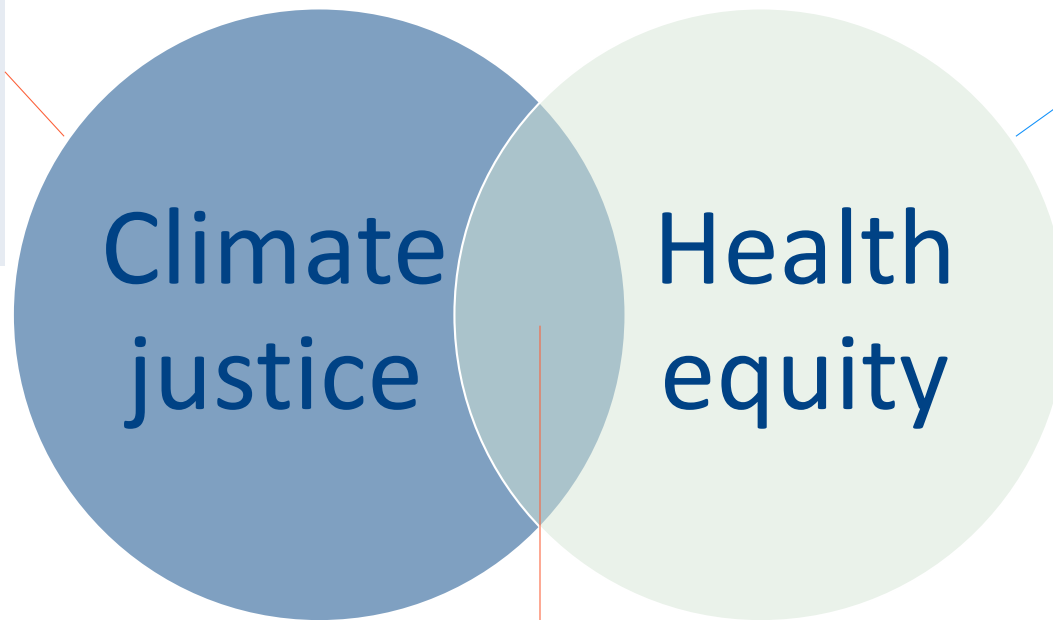
Fair balance between risk, benefits, and ability to mitigate or adapt to climate change. This includes non-human health considerations (ecosystems, biodiversity)



Equal opportunity to health, meaning unfair, avoidable differences have been addressed and mitigated

Climate justice & health equity

Fair balance between risk, benefits, and ability to mitigate or adapt to climate change. This includes non-human health considerations (ecosystems, biodiversity)



Equal opportunity to health, meaning unfair, avoidable differences have been addressed and mitigated

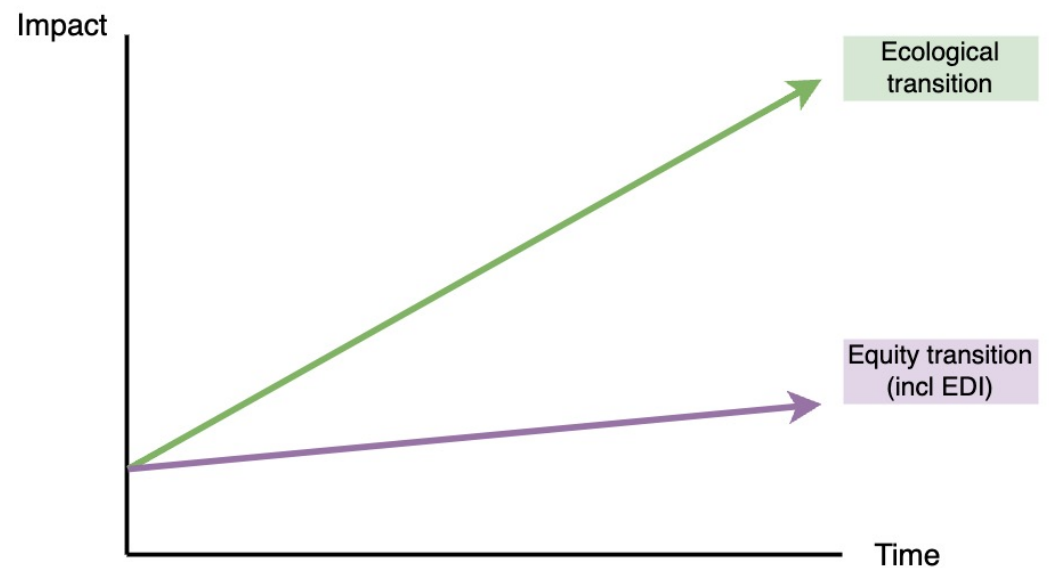
Health of current and future generations, everywhere in the world. This is also affected by healthcare transition choices now made.

But do we have a clear vision of what a planetary proof public health system can and should be?

What might happen if we **do not** deliberately and systemically include this in the healthcare transitions ongoing?

Are the ecological dimension of the planetary health transformation taking place at the same pace at the social dimensions?

How do we ensure the accelerated pace of the *ecological sustainability transition* is kept up by the social sustainability or *health equity transition*?



Key messages

- We are in the middle of a transformation towards a more sustainable healthcare delivery – and have an opportunity to embed a climate justice and health equity lens
- Climate justice and health equity are connected, and recognizing this will help to shape the next steps and ensure *equity and justice by design*
- Unchartered territory, requires collaboration, learning, sharing